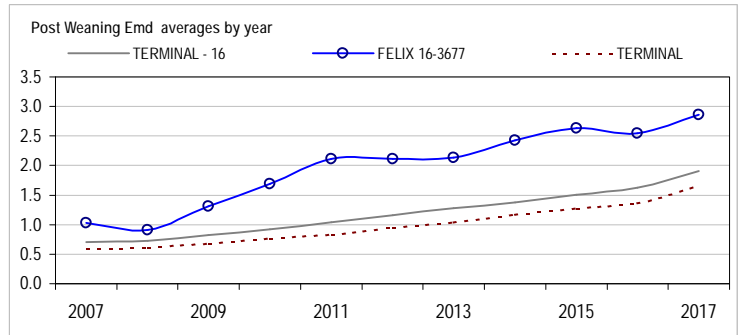
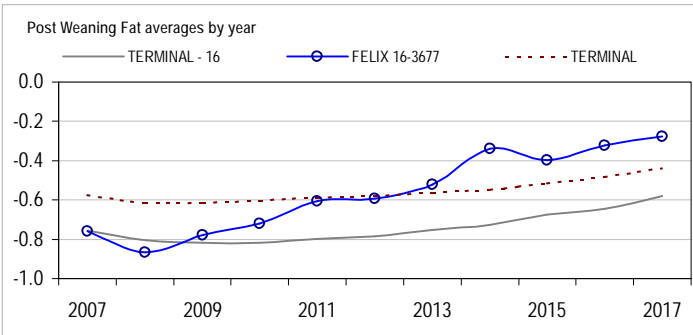
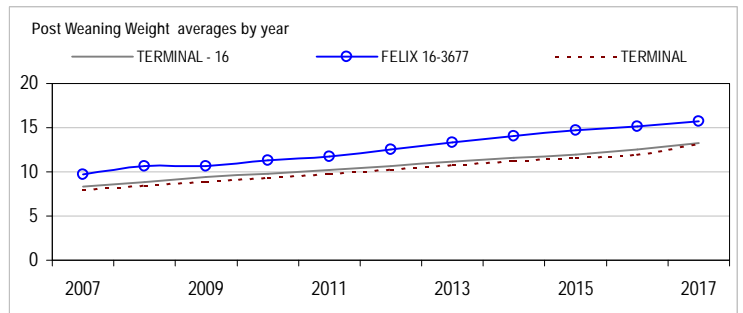
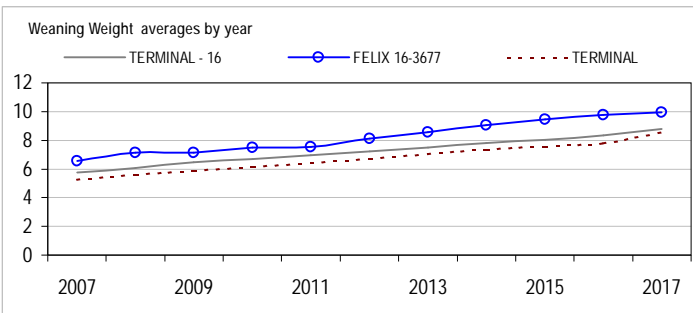
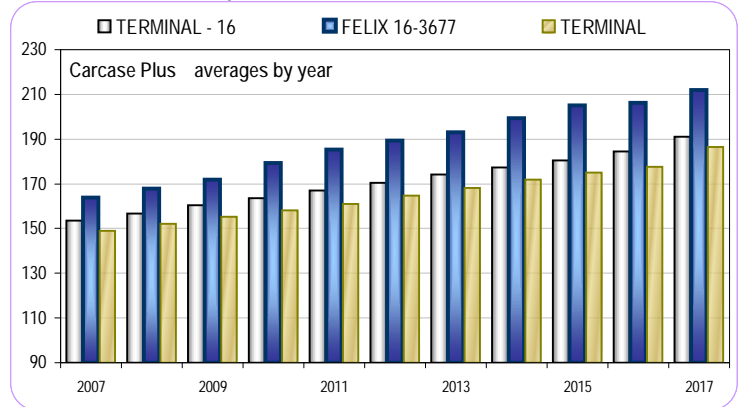
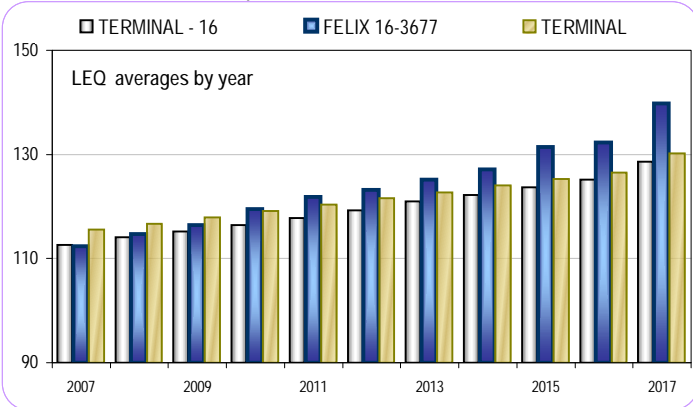
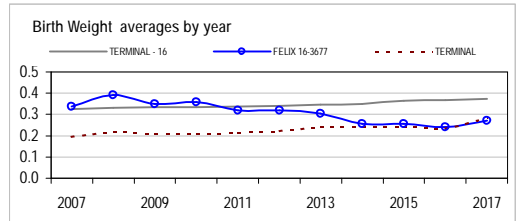


Analysis : **TERMINAL - 16**

Dated : **15 January 2018**



TERMINAL - 16								
	Bwt	Wwt	Pwwt	Pfat	Pemd	LEQ	Carcase+	Counts
2008	0.33	6.09	8.82	-0.80	0.73	114.1	156.6	48556
2009	0.34	6.45	9.39	-0.82	0.82	115.2	160.6	46918
2010	0.34	6.70	9.79	-0.82	0.93	116.5	163.7	47413
2011	0.34	6.98	10.25	-0.80	1.04	117.8	167.1	47871
2012	0.34	7.22	10.64	-0.78	1.16	119.3	170.4	47589
2013	0.35	7.51	11.15	-0.75	1.28	121.0	174.1	46029
2014	0.35	7.79	11.59	-0.73	1.38	122.2	177.3	46017
2015	0.36	8.04	11.98	-0.68	1.51	123.7	180.5	46747
2016	0.37	8.36	12.55	-0.65	1.62	125.2	184.4	46201
2017	0.38	8.78	13.29	-0.58	1.90	128.6	191.0	34813



Reports are prepared using data supplied by breeders and/or accredited operators for the analysis. SheepGenetics cannot guarantee the accuracy of this data. ASBV's are designed to estimate genetic merit of animals from the data supplied. Reports are provided to assist breeders but no liability is accepted for the outcome resulting from the use of this information.

FELIX 16-3677								
	Bwt	Wwt	Pwwt	Pfat	Pemd	LEQ	Carcase+	Counts
2008	0.39	7.16	10.69	-0.87	0.91	114.7	168.0	820
2009	0.35	7.15	10.64	-0.78	1.31	116.5	172.0	794
2010	0.36	7.50	11.34	-0.72	1.69	119.5	179.4	803
2011	0.32	7.56	11.74	-0.61	2.12	121.8	185.3	873
2012	0.32	8.12	12.53	-0.59	2.12	123.2	189.3	843
2013	0.31	8.56	13.30	-0.52	2.14	125.2	193.0	835
2014	0.26	9.06	14.06	-0.34	2.43	127.1	199.3	814
2015	0.26	9.45	14.68	-0.40	2.63	131.5	205.0	1001
2016	0.24	9.77	15.18	-0.32	2.54	132.4	206.2	967
2017	0.27	9.97	15.69	-0.28	2.86	139.8	211.9	994

Linkage Summary	
FELIX 16-3677	
Weights	Yes
Carcase	Yes
WEC	Yes
Reproduction	Yes
Site Code	163677

21-January-2018

