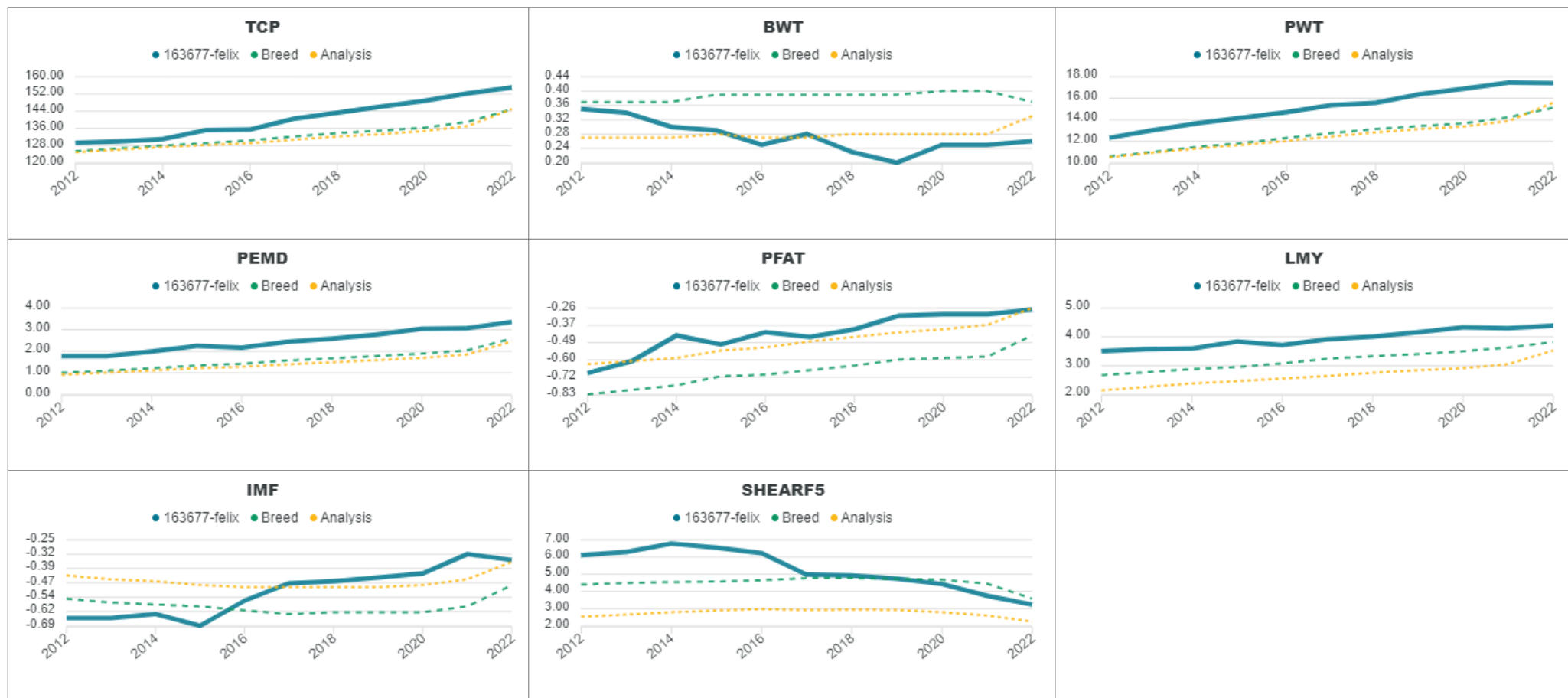
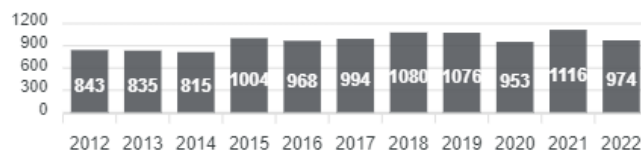


Report: **Genetic Trends**
 Analysis: **TERMINAL**
 Analysis date: **01/08/2022**
 Flock code: **163677**
 Flock name: **163677-FELIX**

Total animals by drop



Report: **Genetic Trends**
 Analysis: **TERMINAL**
 Analysis date: **01/08/2022**
 Flock code: **163677**
 Flock name: **163677-FELIX**



Year	TCP	BWT	PWT	PEMD	PFAT	LMY	IMF	SHEARF5
2012	129.22	0.35	12.32	1.77	-0.69	3.50	-0.65	6.10
2013	129.92	0.34	13.04	1.77	-0.61	3.57	-0.65	6.29
2014	130.95	0.30	13.69	1.99	-0.44	3.59	-0.63	6.78
2015	135.24	0.29	14.20	2.25	-0.50	3.84	-0.69	6.55
2016	135.40	0.25	14.71	2.17	-0.42	3.72	-0.56	6.23
2017	140.45	0.28	15.35	2.43	-0.45	3.92	-0.47	4.97
2018	143.30	0.23	15.57	2.59	-0.40	4.01	-0.46	4.92
2019	146.15	0.20	16.38	2.77	-0.31	4.16	-0.44	4.74
2020	148.80	0.25	16.89	3.04	-0.30	4.33	-0.42	4.43
2021	152.34	0.25	17.47	3.07	-0.30	4.30	-0.32	3.75
2022	154.98	0.26	17.41	3.36	-0.27	4.39	-0.35	3.23

Year	TCP	BWT	PWT	PEMD	PFAT	LMY	IMF	SHEARF5
2012	125.40	0.37	10.58	1.00	-0.83	2.67	-0.55	4.40
2013	126.66	0.37	11.01	1.10	-0.80	2.77	-0.57	4.49
2014	127.99	0.37	11.49	1.21	-0.77	2.88	-0.58	4.54
2015	129.13	0.39	11.83	1.34	-0.71	2.95	-0.59	4.57
2016	130.44	0.39	12.32	1.42	-0.70	3.08	-0.61	4.65
2017	132.20	0.39	12.76	1.57	-0.67	3.24	-0.63	4.77
2018	133.79	0.39	13.14	1.67	-0.64	3.33	-0.62	4.77
2019	134.98	0.39	13.42	1.78	-0.60	3.40	-0.62	4.73
2020	136.31	0.40	13.67	1.89	-0.59	3.50	-0.62	4.68
2021	139.09	0.40	14.24	2.04	-0.58	3.63	-0.59	4.45
2022	144.90	0.37	15.12	2.59	-0.44	3.82	-0.48	3.58

Year	TCP	BWT	PWT	PEMD	PFAT	LMY	IMF	SHEARF5
2012	124.90	0.27	10.50	0.91	-0.63	2.14	-0.43	2.53
2013	126.08	0.27	10.95	1.01	-0.61	2.26	-0.45	2.65
2014	127.28	0.27	11.33	1.11	-0.59	2.38	-0.46	2.79
2015	128.23	0.28	11.67	1.21	-0.54	2.46	-0.48	2.89
2016	129.10	0.27	12.03	1.28	-0.52	2.55	-0.49	2.97
2017	130.72	0.27	12.44	1.39	-0.48	2.64	-0.49	2.91
2018	132.22	0.28	12.83	1.49	-0.45	2.75	-0.49	2.94
2019	133.34	0.28	13.14	1.59	-0.42	2.84	-0.49	2.92
2020	134.77	0.28	13.38	1.69	-0.40	2.91	-0.48	2.79
2021	137.12	0.28	13.89	1.85	-0.37	3.05	-0.45	2.60
2022	145.00	0.33	15.59	2.45	-0.26	3.53	-0.36	2.24

Reports are prepared using data supplied by breeders and/or accredited operators. We cannot guarantee the accuracy of this data.
 ASBV's are designed to estimate genetic merit of animals from the data supplied.
 The reports are provided to assist breeders but no liability is accepted for the outcome resulting from the use of this information.