



25th Annual On Property Lambplan Ram Sale 'Springvale' 349 Adams Lane Greenethorpe 2809

Thursday 7th September 2023
Sale starts 1 pm Sharp



AuctionsPlus

Poll Dorsets Lots 1 - 150 White Suffolks from Lot 151 - 212

Welcome to the 25th Annual Felix Rams On-property Lambplan Ram Sale.

The sale will also be simultaneously interfaced on Auction Plus.

All rams will be sold individually and in catalogue order. White Suffolks will be penned at the front of the shed to allow inspection to continue while the Poll Dorsets are being sold.

Animal Health / QA

MN3 and 2nd Generation Approved Vaccinated for Ovine Johnes Disease - Certificate No NS 21128, Ovine Brucellosis Accredited Free - Certificate No. 76316

All lambs are vaccinated with Gudair at marking, Eryvac x 2, and the rams have been given a full vaccination program with Glanvac 6 in 1, last vaccination Eryvac+B12 11/08/23 and were drenched with Trifecta 11/08/23 Felix Rams is a closed flock, and the sheep are declared to be footrot and lice free. A Sheep Health Statement will be displayed, and available if required. LPA NVDs will be provided with all rams.

Lambplan averages for the 2022 drop (all asbvs and indexes Lambplan run 01/08/23)

Averages	BWT	PWT	PFAT	PEMD	PWEC	LMY	IMF	TCP	LEQ
150 Felix PD Rams	0.27	17.9	-0.36	3.4	-16	4.5	-0.32	158.8	155.5
2022 PD Breed	0.39	14.4	-0.54	2.2	-18	3.6	-0.53	140.7	134.8
62 Felix WS Rams	0.22	19.2	0.08	3.2	-43	4.0	-0.16	162.4	163.4
2022 WS Breed	0.31	15.9	-0.27	2.2	-25	3.4	-0.34	145.4	141.6

BWT "birthweight" – lower birthweight values will produce lighter birthweight lambs

PWT "postweaning weight" - a higher pwt value ram will produce faster growing progeny

PFAT "postweaning fat" – the more negative the value for pfat, the leaner the progeny will be

PEMD "postweaning eye muscle depth" – rams with higher values for pemd will have more muscle especially in the high value loin area and hind quarter, and better overall carcass shape.

PWEC "postweaning worm egg count" – a lower (more negative) value for pwec indicates the progeny will have lower worm egg counts and be more resistant to developing a worm burden

IMF "intra muscular fat" rams with higher (more positive) imf will have better eating quality

LMY "lean meat yield" a higher lmy asbv ram will sire higher lean meat yielding lambs

Indexes are designed to help meet different breeding objectives and programs. They are simply a guide to assist in selection, however when doing so producers must consider their own breeding objective. This will involve considering your current ewe base, the environment they are run in and the target market for their progeny. Our recommendation for trade or heavy are a basic indication of the target market a ram may suit. Rodney and Isaac are happy to discuss this at any time.

We do not recommend lamb producers using Terminal Carcass Production (**TCP**) or Lamb Eating Quality (**LEQ**) for anything more than a basic guide. Both TCP (30%) and LEQ (62%) have too much emphasis on the low accuracy traits of IMF and Shearforce. This does not mean that we are not trying to improve eating quality, rather their value to producers is overdone in the calculation of these indexes. This is despite more than 95% of our offering being in the top 20% for both indexes. We believe you can achieve a better balance of traits by looking at the asbvs.

At Felix Rams almost all the important data for these rams is collected before they are 7 months of age – reflecting what you aim to do in your prime lamb enterprise. The rams are run commercially in large management groups mainly on dryland lucerne/perennial grass pasture, so their performance is what you will see in your paddocks. What you see is what you get. Our aim is to breed sound rams to efficiently produce outstanding prime lambs.

Our commitment to accurate data collection and effective management groups and their use in estimating the breeding value of rams is second to none.

Rodney, Liz, Isaac and Val Watt

NB Ram breeders. The minimum price for a ram to be individually registered as a stud ram will be \$3000. We retain the right to collect semen for our own use at our expense from any ram individually registered.

Memo of Poll Dorset Sires used for 2022 drop	
170101	By Marocara 150049, MLA Reference Flock, low birthweight -0.03, PWT 18.7 top 5%, PEMD 3.7 top 5%. Dam has been our best ET donor.
190141	By Felix 160494 (sire of world record price Poll Dorset ram), first used as lamb, early maturing outstanding growth PWT 20.4 top 1%, muscle PEMD 3.4 top 10%, imf top 5%, LEQ top 1%. Meat Elite Young Sire Team, MLA Resource Flock. Popular semen sire with progeny in 18 flocks
200009	By Felix 190141, used as a lamb, top 5% PEMD 4.1, top 5%, top 1% LEQ
200356	By Jewsharp 150014, used as a lamb, PWT 19.1 top 5%, LMY top 5%, progeny in 10 flocks, Meat Elite Young Sire Team ram
210053	By Bruan 190007, used as a lamb, lower bwt sire
210204	By Linton 160625, used as a lamb, lower bwt, top 1% imf, top 5% LEQ
210215	By Felix 190968, used as a lamb, top 5% for pwt and lmy, top 10% pemd
210346	By Bruan 190275, used as a lamb, top 5% pemd and lmy, moderate bwt, top 5% LEQ
210351	By Felix 190141, used as a lamb for spring drop, Meat Elite YST, top 5% pemd, LEQ, top 10% pwt
210373	By Felix 170101, used as a lamb, Meat Elite YST, popular semen sire, top 1% LEQ
210422	By Felix 190141, used as a lamb, top 1% pemd, top 5% lmy and LEQ
210483	By Felix 190141, used as a lamb spring drop, Meat Elite YST, popular semen sire, top 5% pemd, top 10% pwt
210540	By Felix 191112, used as lamb, lower bwt, top 5% pemd
211194	By Felix 190141, used as a lamb spring drop (ewe lambs), lower bwt, top 5% pwt
211315	By Felix 200930, used as a lamb spring drop (ewe lambs), Meat Elite YST, top 1% pwt, top 5% LEQ
BD205582	Bundara Downs 205582 by Derrynock 180067, semen sire
IL200286	Ilfracombe 200286 by Linton 160625, semen sire, good muscle, wec and eq
IV200010	Ivadene 200010 by Pepperton 180339, semen sire, very good muscle
JE190439	Jewsharp 190439 by Bundara Downs 133266, semen sire
MV190152	Melton Vale 190152 by Wunnamurra 120455, semen sire, only used in ET program
OW180425	Old Woombi 180425 by Old Woombi 170410, semen sire
WO207491	Woolumbool 207491 By Melton Vale 160114, semen sire

Memo of White Suffolk Sires used for 2022 drop	
200145	By Ashmore170986, Superwhites Young Sire Team 2022, progeny in 12 flocks, low bwt and good balance between growth, muscle and eating quality.
201156	By Felix 191175, PWT 21.4 Superwhites Young Sire Team, progeny in 16 flocks, sired top priced ram 2022 sale
210385	By Felix 200280, used as a lamb, top 1% for pwt, pemd and leq
210725	By Langley Heights 180231, used as a lamb, top 10% for pwt, pemd and imf, top 5% LEQ
210815	By Ella Matta 190030, used as lamb, top 1% LEQ, top 5% PWT, top 10% pemd, pwec, imf
210906	By Langley Heights 1802321, used as a lamb, top 5% pemd, top 5% LEQ
211102	By Felix 200145, used as lamb, top 1% imf and LEQ, top 5% pwec
211313	By Felix 200145, used as lamb for spring drop (ewe lambs), top 1% pwt and LEQ, top 5% imf
FA180178	Farrer 180178 by Felix 151229, semen sire, top 1% leq, great pwec, top 10% pwt
LH180231	Langley Heights 180231 by LH 160376, semen sire in 28 flocks, good balanced asbvs

Both our Poll Dorset and White Suffolk flocks are 5 Star for Sheep Genetics Data Quality Score.

We use a combination of young sires and well linked mature sires along with DNA testing to provide high accuracy ASBVs. Semen used by Meat Elite (PD breeding group) and Superwhites (WS breeding group), along with other semen sales, sires in the Resource Flock, and the use of AI sires increases our linkage in the SG database and the accuracy of the ASBVs.

Poll Dorsets Lots 1-150					Trait Leaders			Top1%	Red Top 5%	Blue Top 10%	Green Top 20%			Notes	
Lot	Animal	DNA	s/t	DOB	Sire	BWT	PWT	PFAT	PEMD	PWEC	TCP	LEQ	Crossbred	Merino	Notes
1	220015		1	24/06	210540	0.28	18.4	0.3	4.1	-26	157.0	155.3	trade	trade/heavy	
2	220529	*	2	27/06	IV200011	0.29	18.3	-0.4	4.2	-39	160.2	154.9	trade/heavy	trade/heavy	
3	220170	*	2	21/06	210422	0.45	20.1	-0.3	4.0	3	168.0	158.0	trade/heavy	trade/heavy	
4	220315		2	24/06	210215	0.40	20.4	-1.0	3.0	7	160.7	150.3	heavy/trade	heavy	
5	220261		2	23/06	210215	0.45	19.3	-1.0	3.0	15	157.9	147.2	heavy/trade	heavy	
6	220071		1	29/06	200009	0.35	18.1	-0.9	3.5	-11	165.7	163.3	heavy/trade	heavy/trade	
7	220431		3	26/06	200356	0.31	19.5	-0.5	3.3	9	158.6	152.4	trade/heavy	heavy/trade	
8	220555	*	2	27/06	IL200292	0.51	17.6	0.3	3.6	-18	161.0	160.0	trade	trade/heavy	
9	220047	*	1	27/06	MV190152	0.27	17.3	0.3	4.3	61	163.4	159.2	trade	trade/heavy	
10	220298		2	23/06	210053	0.32	17.2	0.3	3.3	-15	154.7	152.7	trade	trade/heavy	
11	220993		2	05/07	210422	0.20	17.2	-0.5	3.8	-7	159.9	153.8	trade/heavy	trade/heavy	
12	220402		2	25/06	190141	0.26	19.5	0.3	3.9	43	165.5	160.7	trade	trade/heavy	
13	221071		2	11/07	200009	0.20	17.4	-0.5	3.5	8	153.3	145.2	trade/heavy	trade/heavy	
14	220792	*	2	29/06	BD205582	0.39	17.7	-0.1	3.3	-30	150.1	144.5	trade/heavy	trade/heavy	
15	220287	*	3	23/06	210540	0.22	18.4	0.0	4.2	-53	165.4	161.0	trade/heavy	trade/heavy	
16	220202		3	22/06	210422	0.42	20.2	-0.4	3.4	21	162.4	153.3	trade/heavy	trade/heavy	
17	220291		3	23/06	200356	0.29	17.8	-0.5	4.1	-9	161.0	154.0	trade/heavy	trade/heavy	
18	220374		2	25/06	190141	0.24	18.8	-0.3	2.9	11	159.1	156.6	trade/heavy	trade/heavy	
19	220316		2	24/06	200356	0.36	18.4	-0.8	3.0	-7	161.3	156.8	heavy/trade	heavy	
20	220148		3	20/06	210053	0.42	21.0	-0.5	2.7	-17	160.8	155.5	heavy	heavy	
21	221048		2	10/07	210204	0.15	17.5	-0.4	3.0	-10	156.6	156.4	trade/heavy	trade/heavy	
22	220030		1	26/06	210204	0.25	18.1	-0.7	2.9	-17	159.7	159.3	heavy/trade	heavy	
23	220172		2	21/06	210204	0.29	18.6	-0.7	2.5	2	157.9	156.3	heavy	heavy	
24	220250		2	22/06	210422	0.24	16.3	0.2	4.5	-9	158.3	152.5	trade	trade/heavy	
25	220776	*	3	29/06	IL200296	0.52	17.4	-0.7	3.8	-50	165.6	165.6	heavy/trade	heavy/trade	
26	220052		2	28/06	BD205582	0.26	17.6	0.2	3.0	-15	153.4	150.5	trade/heavy	trade/heavy	
27	220017	*	1	25/06	WO207491	0.21	17.7	-0.6	2.8	20	155.5	152.5	heavy	heavy	
28	220171	*	2	21/06	210422	0.28	17.9	0.0	4.8	-18	166.8	161.5	trade/heavy	trade/heavy	
29	220849		2	30/06	200356	0.37	18.3	-0.5	3.3	6	159.0	152.8	trade/heavy	heavy/trade	
30	220225		2	22/06	200356	0.37	18.8	-0.6	2.3	-11	155.0	152.8	heavy	heavy	
31	220412		2	25/06	210215	0.29	18.3	-0.6	3.1	22	157.4	149.8	heavy/trade	heavy	
32	220312	*	2	24/06	JE190439	0.34	18.8	-0.6	3.2	-17	162.0	164.9	heavy/trade	heavy	
33	220380		2	25/06	210053	0.26	17.8	-0.3	3.1	-7	158.2	155.0	trade/heavy	trade/heavy	
34	220297		2	23/06	200356	0.34	18.1	-0.4	3.0	11	155.3	149.0	trade/heavy	trade/heavy	
35	220732	*	4	29/06	IL200295	0.19	16.6	0.1	4.5	-44	161.3	163.9	trade/heavy	trade/heavy	

Lot	Animal	DNA	s/t	DOB	Sire	BWT	PWT	PFAT	PEMD	PWEC	TCP	LEQ	Crossbred	Merino	Notes
36	220518		3	27/06	IL200287	0.42	18.9	-0.4	3.4	-39	161.5	161.2	trade/heavy	trade/heavy	
37	221115		1	14/07	210215	0.37	19.5	-1.1	3.0	7	157.7	149.8	heavy/trade	heavy	
38	220249		2	22/06	210422	0.30	16.9	-0.4	3.8	-20	156.6	151.1	trade/heavy	trade/heavy	
39	220164		3	20/06	210422	0.24	16.9	-0.4	4.3	-32	161.3	155.2	trade/heavy	trade/heavy	
40	220453		2	26/06	200356	0.44	17.7	-0.6	3.4	-21	161.2	156.4	trade/heavy	heavy/trade	
41	221113		1	14/07	210373	0.13	16.9	-0.4	2.8	-20	154.9	155.3	trade/heavy	heavy/trade	
42	220147		3	20/06	210053	0.36	18.5	-0.4	2.7	-25	155.8	152.3	heavy/trade	heavy/trade	
43	221224		3	15/07	210540	0.24	18.7	-0.9	2.4	-29	150.5	147.4	heavy	heavy	
44	220501		2	26/06	190141	0.28	17.2	-0.1	3.5	-29	160.4	159.4	trade/heavy	trade/heavy	
45	220498		3	26/06	200356	0.27	18.8	-0.4	3.3	-2	159.6	154.7	trade/heavy	trade/heavy	
46	221084		2	12/07	200356	0.24	17.2	-0.7	2.9	-2	155.3	151.8	heavy/trade	heavy	
47	220443		2	26/06	200356	0.35	17.6	-0.6	3.6	-6	161.8	156.3	heavy/trade	heavy/trade	
48	220897		2	02/07	210346	0.35	17.0	-0.2	4.0	-28	160.6	158.8	trade/heavy	trade/heavy	
49	220227		2	22/06	210540	0.16	16.8	-0.4	3.0	-18	151.0	149.8	trade/heavy	trade/heavy	
50	220862		4	28/06	IL200297	0.42	18.0	-0.7	2.9	-33	159.5	161.2	heavy/trade	heavy	
51	220039		1	26/06	IV200010	0.13	16.6	0.1	4.1	-36	158.2	155.5	trade/heavy	trade/heavy	
52	220961		2	03/07	210346	0.29	16.8	-0.9	3.8	-40	161.8	156.8	heavy/trade	heavy/trade	
53	221158		1	16/07	200356	0.36	17.6	-0.7	3.4	-9	160.0	154.7	heavy/trade	heavy/trade	
54	220522	*	3	27/06	IL200289	0.56	19.4	-0.6	4.1	-21	167.7	162.3	trade/heavy	heavy/trade	
55	221007		1	05/07	200009	0.17	17.6	-0.3	3.5	19	159.6	154.4	trade/heavy	trade/heavy	
56	220272		2	23/06	210346	0.39	17.8	-0.2	3.1	-47	158.6	158.4	trade/heavy	trade/heavy	
57	220063	*	1	28/06	WO207491	0.37	17.6	0.2	3.3	17	157.6	157.8	trade/heavy	trade/heavy	
58	220578		3	27/06	210346	0.10	15.9	-0.4	4.3	-25	156.4	151.6	trade/heavy	trade/heavy	
59	220853		2	30/06	210540	0.12	18.0	-0.1	3.6	-17	157.3	155.2	trade/heavy	trade/heavy	
60	220430		3	26/06	200356	0.25	18.2	-0.2	3.4	25	156.7	150.1	trade/heavy	trade/heavy	
61	220121	*	2	19/06	210373	0.31	18.3	0.4	2.9	-28	152.2	153.7	trade	trade/heavy	
62	220554	*	2	27/06	IL200291	0.35	15.3	0.3	4.1	-54	161.8	164.8	trade	trade	
63	220280		2	23/06	210540	0.00	16.5	-0.3	4.1	-52	155.8	155.6	trade/heavy	trade/heavy	
64	220325		3	24/06	200356	0.17	17.0	0.2	3.8	17	153.4	147.1	trade	trade/heavy	
65	220338		2	24/06	200009	0.16	17.6	0.1	5.0	-1	167.7	162.3	trade/heavy	trade/heavy	
66	220411		2	25/06	210215	0.28	18.3	-0.6	3.7	12	160.9	153.1	heavy/trade	heavy/trade	
67	220646		2	28/06	200356	0.31	18.1	-0.5	2.8	7	155.7	151.5	heavy/trade	heavy	
68	220276		3	23/06	210373	0.21	16.8	-0.4	3.0	-41	154.8	154.8	trade/heavy	trade/heavy	
69	220711		2	29/06	210204	0.22	17.0	-0.4	3.1	-28	156.6	157.7	trade/heavy	trade/heavy	
70	220329		3	24/06	210346	0.24	16.4	-0.3	3.1	-37	154.3	154.4	trade/heavy	trade/heavy	
71	220137		2	20/06	210373	0.23	17.7	-0.8	2.8	-35	158.6	160.8	heavy	heavy	

Lot	Animal	DNA	s/t	DOB	Sire	BWT	PWT	PFAT	PEMD	PWEC	TCP	LEQ	Crossbred	Merino	Notes
72	220566		2	27/06	210422	0.29	17.7	-0.2	3.8	-18	156.7	149.8	trade/heavy	trade/heavy	
73	220900		2	02/07	210204	0.33	18.1	-0.8	2.9	-9	157.9	154.9	heavy/trade	heavy	
74	220800		2	29/06	210215	0.31	18.6	-0.7	2.8	-13	153.1	147.7	heavy	heavy	
75	220579		2	27/06	IL200293	0.29	16.1	-0.2	3.4	-18	157.6	158.6	trade/heavy	trade/heavy	
76	221154		3	15/07	210373	0.16	16.9	-0.5	3.0	-32	158.6	157.6	trade/heavy	heavy/trade	
77	220409		2	25/06	IL200286	0.38	16.9	0.0	3.8	-19	159.0	158.4	trade/heavy	trade/heavy	
78	221230		3	18/07	200009	0.27	17.2	-0.3	3.3	5	159.3	157.2	trade/heavy	trade/heavy	
79	221051		2	11/07	210422	0.24	17.3	-0.4	3.6	-24	159.1	154.7	trade/heavy	trade/heavy	
80	221147	*	2	15/07	210373	0.15	18.3	0.2	3.9	-22	165.1	166.7	trade/heavy	trade/heavy	
81	220353	*	3	24/06	210373	0.32	19.1	-0.2	2.6	-29	158.2	156.9	heavy/trade	heavy/trade	
82	221211	*	2	17/07	210373	0.21	19.7	-0.9	2.7	-41	159.3	157.1	heavy	heavy	
83	220141		2	20/06	210346	0.26	17.1	-0.6	2.7	-48	155.5	156.1	heavy	heavy	
84	221162		2	16/07	210373	0.04	17.1	-0.3	3.1	-39	156.4	158.5	trade/heavy	trade/heavy	
85	220558		3	27/06	200356	0.25	17.8	-0.4	3.6	1	157.1	151.7	trade/heavy	trade/heavy	
86	220645		2	28/06	200356	0.33	18.4	-0.6	2.6	17	155.2	150.0	heavy	heavy	
87	220622		2	28/06	IV200014	0.21	16.2	0.6	4.6	-33	157.0	153.9	trade	trade	
88	221207	*	2	16/07	210346	0.23	16.4	-0.7	3.4	-34	151.9	147.5	heavy/trade	heavy/trade	
89	220006		1	20/06	210422	0.29	16.6	0.1	3.8	-22	158.5	156.6	trade/heavy	trade/heavy	
90	220802		2	29/06	210346	0.32	16.6	-0.7	3.6	-39	159.1	156.2	trade/heavy	heavy/trade	
91	221023		3	05/07	210346	0.31	16.8	-0.5	3.4	-34	156.0	151.9	trade/heavy	heavy/trade	
92	220623		2	28/06	IV200015	0.28	17.2	0.2	3.8	-21	155.5	151.1	trade/heavy	trade/heavy	
93	221151		2	15/07	210373	0.07	17.8	-0.2	3.3	-36	161.1	162.7	trade/heavy	trade/heavy	
94	220523	*	3	27/06	IL200290	0.45	17.3	-0.7	4.3	-40	168.2	166.4	heavy/trade	heavy/trade	
95	220499		3	26/06	200356	0.20	17.3	-0.4	3.7	-10	159.8	155.5	trade/heavy	trade/heavy	
96	220520		3	27/06	IL200288	0.48	18.2	-0.6	2.9	-48	162.9	166.0	heavy/trade	heavy	
97	220572		3	27/06	IV200013	0.37	18.5	-0.4	3.0	-30	157.6	154.3	trade/heavy	trade/heavy	
98	221057		2	11/07	210373	0.06	16.6	-0.4	3.0	-21	156.2	154.9	trade/heavy	trade/heavy	
99	220025		1	25/06	210373	0.14	17.5	-0.6	3.6	-27	162.6	162.5	heavy/trade	heavy/trade	
100	220180		3	21/06	210540	0.04	17.8	-0.2	4.3	-37	159.7	158.4	trade/heavy	trade/heavy	
101	220395		2	25/06	210053	0.19	17.2	-0.4	2.9	-39	152.3	150.6	trade/heavy	heavy/trade	
102	220896		2	02/07	210346	0.34	16.8	-0.6	3.8	-40	160.9	159.2	trade/heavy	heavy/trade	
103	220669		3	28/06	IL200294	0.26	16.2	-0.5	3.3	-27	161.6	162.4	trade/heavy	trade/heavy	
104	220852	*	3	29/06	210346	0.23	16.5	-0.2	3.3	-41	154.5	150.4	trade/heavy	trade/heavy	
105	220321		2	24/06	210373	0.10	16.4	0.2	3.3	-25	150.6	150.0	trade	trade/heavy	
106	220760		3	29/06	210053	0.34	17.0	-0.1	3.3	-19	154.1	151.9	trade/heavy	trade/heavy	
107	220478		3	26/06	210204	0.20	17.2	0.2	2.9	-16	153.5	153.8	trade/heavy	trade/heavy	

Lot	Animal	DNA	s/t	DOB	Sire	BWT	PWT	PFAT	PEMD	PWEC	TCP	LEQ	Crossbred	Merino	Notes
108	220626		2	28/06	OW180426	0.31	18.4	-0.6	3.1	-4	159.2	153.2	heavy/trade	heavy	
109	221160		2	16/07	190141	0.33	19.5	-0.2	2.6	2	158.8	157.4	heavy/trade	heavy/trade	
110	221103		2	14/07	210215	0.29	18.4	-0.7	2.9	4	154.4	148.0	heavy/trade	heavy	
111	220350		3	24/06	IL200286	0.27	17.0	0.3	4.0	-58	162.1	165.6	trade	trade/heavy	
112	221210		2	17/07	210373	0.16	18.2	0.0	3.9	-29	163.0	163.1	trade/heavy	trade/heavy	
113	220953	*	3	03/07	210422	0.28	17.3	-0.5	4.3	-1	162.9	154.9	trade/heavy	trade/heavy	
114	220489		3	26/06	OW180425	0.13	17.0	-1.0	3.1	-46	160.9	159.0	heavy/trade	heavy	
115	220571		3	27/06	IV200012	0.34	18.5	-0.1	3.4	-16	158.6	154.4	trade/heavy	trade/heavy	
116	220149		2	20/06	210540	0.06	16.4	-0.2	3.4	-44	152.4	153.1	trade/heavy	trade/heavy	
Spring Poll Dorsets Lots 121-150						Trait Leaders				Top1%	Red Top 5%	Blue Top 10%	Green Top 20%		
117	221518		1	11/08	210351	0.40	19.4	-0.3	2.9	0	155.9	148.7	trade/heavy	trade/heavy	
118	221530		2	13/08	170101	0.16	18.4	-0.4	3.9	-10	159.1	154.8	trade/heavy	trade/heavy	
119	221538		2	15/08	170101	0.24	18.7	-0.4	2.9	-14	155.1	153.3	trade/heavy	trade/heavy	
120	221537		2	15/08	170101	0.17	19.1	-0.6	3.3	-11	161.2	158.9	heavy/trade	heavy	
121	221392		1	22/08	211315	0.21	18.7	-0.6	3.3	-33	160.9	159.7	heavy/trade	heavy/trade	
122	221356	*	1	19/08	210483	0.18	19.7	-0.3	3.3	-12	164.2	161.7	trade/heavy	trade/heavy	
123	221637		2	29/08	210351	0.24	18.0	-0.3	3.4	-9	158.6	155.4	trade/heavy	trade/heavy	
124	221577		2	17/08	210351	0.36	17.7	-0.1	3.4	-16	154.8	149.8	trade/heavy	trade/heavy	
125	221564		3	17/08	210351	0.34	18.3	0.7	3.2	0	149.9	146.2	trade	trade	
126	221710		1	30/08	211194	0.22	19.1	-0.4	3.0	11	159.1	154.0	trade/heavy	trade/heavy	
127	221459		2	25/08	211194	0.16	18.4	-0.5	3.9	-5	164.6	160.2	trade/heavy	trade/heavy	
128	221531		2	13/08	170101	0.20	19.1	-0.9	3.2	9	158.7	152.3	heavy/trade	heavy	
129	221420	*	1	24/08	210483	0.06	16.5	-0.2	3.3	-43	155.9	155.7	trade/heavy	trade/heavy	
130	221357	*	1	19/08	210483	0.24	19.2	0.2	3.0	-5	160.7	156.4	trade/heavy	trade/heavy	
131	221697		1	28/08	211315	0.38	19.2	-0.9	3.0	-33	161.7	160.2	heavy/trade	heavy	
132	221528		2	13/08	210351	0.25	19.3	0.0	3.3	-10	158.1	154.3	trade/heavy	trade/heavy	
133	221644		2	30/08	200356	0.40	18.4	-0.3	2.8	-16	155.7	153.5	heavy/trade	heavy/trade	
134	221463		1	25/08	211315	0.39	18.8	-1.1	2.9	-21	162.0	158.3	heavy	heavy	
135	221694		2	28/08	211194	0.19	18.3	-0.2	3.1	32	160.5	156.2	trade/heavy	trade/heavy	
136	221441		1	25/08	210483	0.39	19.4	-0.2	2.9	-44	158.1	156.9	trade/heavy	trade/heavy	
137	221410	*	1	24/08	210373	0.17	18.4	0.0	2.6	-6	151.9	149.4	trade/heavy	trade/heavy	
138	221362		1	20/08	211315	0.25	18.9	-1.2	3.0	-15	162.1	158.3	heavy	heavy	
139	221338	*	1	16/08	211194	0.44	21.0	-1.1	3.1	-34	170.2	167.2	heavy/trade	heavy	
140	221559		2	16/08	200356	0.25	19.3	-0.6	4.1	17	164.6	155.7	trade/heavy	heavy/trade	
141	221600		2	20/08	170101	-0.02	17.2	-0.1	3.9	-15	157.8	156.5	trade/heavy	trade/heavy	
142	221612		2	20/08	200009	0.26	16.6	-0.4	4.1	2	163.8	160.3	trade/heavy	trade/heavy	

Lot	Animal	DNA	s/t	DOB	Sire	BWT	PWT	PFAT	PEMD	PWEC	TCP	LEQ	Crossbred	Merino	Notes
143	221477		1	26/08	211315	0.28	19.2	-1.1	2.3	-23	157.9	155.7	heavy	heavy	
144	221445	*	2	25/08	210483	0.15	17.5	0.9	4.3	13	158.2	153.2	trade	trade	
145	221361	*	1	19/08	210373	0.14	18.5	-0.8	1.9	-21	156.6	159.8	heavy	heavy	
146	221326	*	1	11/08	211315	0.45	20.8	-1.3	2.8	-30	168.7	167.5	heavy	heavy	
147	221328	*	2	12/08	211315	0.18	18.2	-0.6	2.7	-31	159.8	162.9	heavy	heavy	
148	221536		2	15/08	170101	0.14	18.0	-0.5	3.3	-9	158.7	156.6	trade/heavy	heavy/trade	
149	221384		2	21/08	211194	0.25	18.5	-0.7	2.9	2	158.2	152.8	heavy/trade	heavy	
150	221419		2	24/08	211194	0.11	18.3	-0.9	3.0	-14	158.6	154.8	heavy/trade	heavy	

White Suffolks Lots 151-212

Trait Leaders

Top1%

Red Top 5%

Blue Top 10%

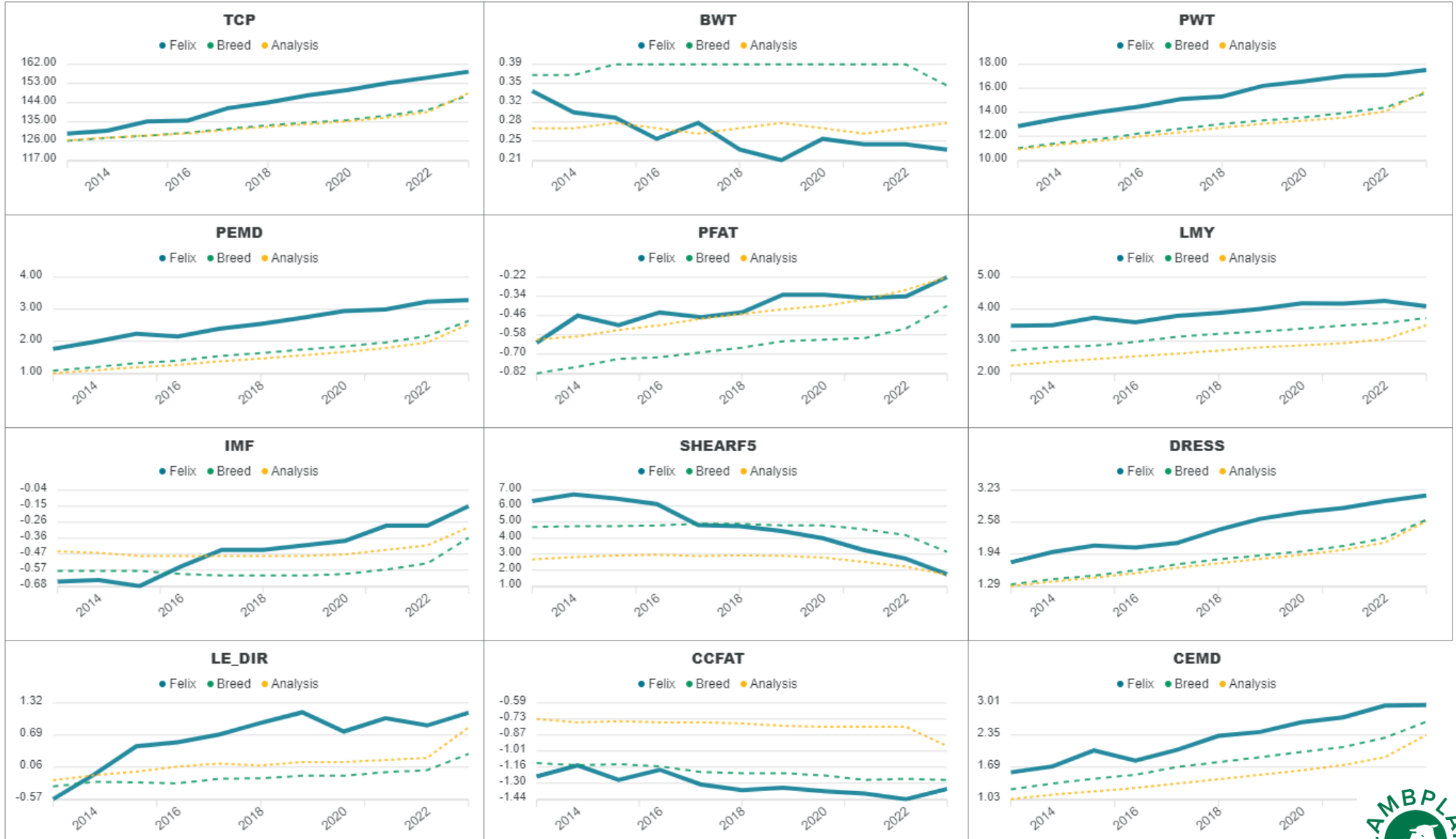
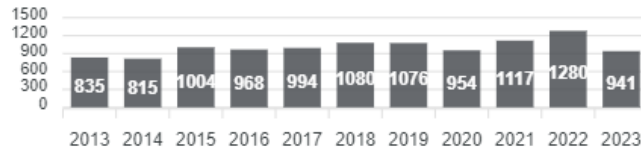
Green Top 20%

151	220681		2	28/06	210815	0.27	19.4	0.4	3.6	-42	164.1	165.5	trade	trade/heavy	
152	220358	*	2	25/06	201156	0.27	20.3	-0.2	2.5	-21	159.7	157.6	heavy/trade	heavy/trade	
153	220996		3	05/07	201156	0.26	19.3	-0.4	2.7	-23	162.2	159.8	heavy/trade	heavy/trade	
154	220865		2	01/07	201156	0.40	20.4	0.0	2.6	-53	162.5	163.8	trade/heavy	trade/heavy	
155	220610	*	2	27/06	210385	0.36	21.4	0.1	4.5	-46	172.9	168.3	trade/heavy	trade/heavy	
156	220114		2	19/06	210385	0.22	19.0	0.5	4.1	-30	164.0	159.1	trade	trade/heavy	
157	220673		2	28/06	210725	0.23	19.2	0.2	3.0	-19	159.8	159.5	trade/heavy	trade/heavy	
158	221018	*	1	09/07	210725	-0.03	18.7	0.4	3.4	-69	162.8	168.4	trade	trade/heavy	
159	220305		2	24/06	210815	0.24	19.0	-0.4	2.7	-42	163.8	166.9	trade/heavy	heavy/trade	
160	220303	*	3	23/06	201156	0.37	21.1	-0.1	2.8	-22	168.0	166.5	heavy/trade	heavy/trade	
161	220357	*	2	25/06	201156	0.38	20.6	0.2	2.7	-3	161.4	156.5	trade/heavy	trade/heavy	
162	221202	*	2	13/06	210906	0.07	17.6	0.2	4.3	-37	160.3	160.0	trade/heavy	trade/heavy	
163	221305	*	1	16/06	211102	0.25	18.3	-0.1	3.1	-46	156.0	152.9	trade/heavy	trade/heavy	
164	220956	*	2	03/07	FA180178	0.24	19.1	-0.6	2.5	-59	161.4	165.8	heavy	heavy	
165	220596	*	3	28/06	201156	0.27	20.3	0.3	3.4	-28	167.6	166.7	trade/heavy	trade/heavy	
166	220795		2	29/06	210385	0.21	19.0	0.0	3.4	-40	162.2	160.2	trade/heavy	trade/heavy	
167	220115		2	19/06	210385	0.25	19.2	0.5	3.7	-25	161.6	156.6	trade	trade/heavy	
168	221067		3	11/07	201156	0.17	18.4	-0.1	3.4	-22	164.2	161.7	trade/heavy	trade/heavy	
169	220514		2	27/06	210725	0.16	17.3	0.4	3.8	-25	159.3	158.0	trade	trade/heavy	
170	220870		3	01/07	201156	0.26	19.5	-0.4	2.8	-25	163.3	161.4	heavy	heavy	
171	220700		3	29/06	201156	0.22	19.1	-0.3	2.6	-36	160.5	160.3	heavy/trade	heavy/trade	
172	220166		2	21/06	201156	0.27	19.8	-0.7	2.3	-31	163.4	163.7	heavy	heavy	
173	220253	*	3	22/06	210385	0.15	18.6	0.8	3.8	-39	160.3	158.7	trade	trade	
174	220385		2	25/06	210385	0.37	19.7	-0.2	3.2	-51	163.8	164.8	trade/heavy	heavy/trade	
175	220597	*	3	28/06	201156	0.26	21.1	0.2	2.8	-51	161.7	162.0	heavy/trade	heavy/trade	
176	220755		2	29/06	201156	0.27	18.4	0.5	3.1	-54	158.7	162.3	trade	trade/heavy	

Lot	Animal	DNA	s/t	DOB	Sire	BWT	PWT	PFAT	PEM	PWEC	TCP	LEQ	Crossbred	Merino	Notes
177	220204	*	3	22/06	210815	0.19	18.3	-0.4	2.9	-44	161.2	161.1	trade/heavy	heavy/trade	
178	220607		3	27/06	210385	0.22	18.1	0.3	3.0	-46	155.7	156.5	trade	trade/heavy	
179	221095	*	2	13/07	210815	0.30	18.4	-0.1	2.9	-52	163.1	169.1	trade/heavy	trade/heavy	
180	220997	*	3	05/07	201156	0.29	20.3	-0.5	2.4	-23	164.5	161.9	heavy	heavy	
181	220001	*	3	15/06	211102	0.21	18.3	-0.1	3.8	-51	165.1	166.8	trade/heavy	trade/heavy	
182	220110		2	18/06	210815	0.31	19.0	-0.5	2.8	-53	158.9	161.1	heavy	heavy	
183	220857	*	3	30/06	210385	0.26	20.1	1.0	3.5	-51	162.6	163.8	trade	trade	
184	220968	*	2	04/07	FA180179	0.08	21.2	-0.2	2.3	-63	164.6	168.5	heavy/trade	heavy	
185	221227		2	17/07	210385	0.03	17.6	0.8	4.2	-43	160.8	160.9	trade	trade	
186	220132	*	2	20/06	210815	0.21	18.8	0.5	3.6	-67	163.1	166.1	trade	trade/heavy	
187	220293		2	23/06	201156	0.23	20.0	-0.7	3.1	-41	167.3	165.2	heavy/trade	heavy	
188	220676		3	28/06	210815	0.23	18.1	-0.1	3.5	-49	161.9	162.8	trade/heavy	trade/heavy	
189	220794		2	29/06	210385	0.14	18.1	0.0	4.1	-60	165.3	164.3	trade/heavy	trade/heavy	
190	220678		2	28/06	210385	0.21	18.5	0.4	3.3	-39	159.5	159.8	trade	trade/heavy	
191	221079		2	12/07	201156	0.28	19.1	-0.3	2.4	-16	157.5	155.6	heavy/trade	heavy/trade	
192	221107	*	2	14/07	210815	0.07	18.5	0.4	3.2	-62	163.8	169.2	trade	trade/heavy	
193	221274	*	3	16/06	210906	0.24	18.1	0.8	4.3	-16	163.4	163.8	trade	trade	
194	221731		2	03/07	210385	0.35	19.9	0.1	2.9	-31	159.1	158.4	trade/heavy	trade/heavy	
195	220092		1	02/07	201156	0.24	18.9	-0.3	2.7	-30	162.1	161.8	heavy/trade	heavy/trade	
196	220307		2	24/06	201156	0.24	19.0	0.0	2.6	-24	160.0	160.3	trade/heavy	trade/heavy	
197	220924	*	2	03/07	LH180231	0.29	20.0	-0.2	2.5	-48	159.3	160.2	heavy/trade	heavy/trade	
198	220073	*	1	29/06	210725	0.23	19.2	-0.3	3.1	-56	163.4	167.4	trade/heavy	trade/heavy	
199	220750	*	3	29/06	210815	0.18	18.3	0.2	3.9	-50	167.0	168.4	trade/heavy	trade/heavy	
200	221725		3	28/06	210815	0.22	18.0	-0.1	3.5	-49	161.9	162.8	trade/heavy	trade/heavy	
201	221401	*	1	22/08	211313	0.26	22.4	-0.2	2.3	-44	164.6	166.9	heavy	heavy	
202	221584	*	3	18/08	200145	0.12	19.0	-0.1	3.1	-51	161.8	168.4	trade/heavy	trade/heavy	
203	221664		1	06/09	210815	0.34	20.0	0.4	2.8	-71	160.6	164.8	trade/heavy	trade/heavy	
204	221589	*	2	19/08	200145	0.02	16.8	0.8	4.2	-62	165.7	171.5	trade	trade	
205	221570	*	2	17/08	200145	0.18	18.6	0.1	3.1	-48	159.2	163.6	trade/heavy	trade/heavy	
206	221673	*	1	31/08	210815	0.24	19.5	0.2	3.0	-41	160.5	163.1	trade/heavy	trade/heavy	
207	221452	*	2	25/08	210815	0.17	19.2	0.4	4.0	-57	170.0	173.1	trade	trade/heavy	
208	221485		2	27/08	210815	0.31	18.5	0.5	3.0	-46	161.0	165.6	trade	trade/heavy	
209	221442	*	2	25/08	211313	0.21	22.2	0.4	2.5	-33	164.8	168.3	heavy/trade	heavy	
210	221523	*	2	13/08	200145	0.08	17.0	0.3	2.5	-66	155.9	165.1	trade	trade/heavy	
211	221640	*	2	29/08	200145	0.11	20.7	0.2	3.2	-61	167.5	171.8	trade/heavy	trade/heavy	
212	221684	*	2	27/08	211313	0.06	19.1	0.1	2.9	-72	161.9	166.6	trade/heavy	trade/heavy	

Report: Genetic Trends
Analysis: TERMINAL
Analysis date: 01/08/2023
Flock code: 163677
Flock name: FELIX

Total animals by drop



Reports are prepared using data supplied by breeders and/or accredited operators. We cannot guarantee the accuracy of this data. ASBV's are designed to estimate genetic merit of animals from the data supplied. The reports are provided to assist breeders but no liability is accepted for the outcome resulting from the use of this information.



Report: Genetic Trends
Analysis: TERMINAL
Analysis date: 01/08/2023
Flock code: 230048
Flock name: 230048-FELIX

Total animals by drop



Reports are prepared using data supplied by breeders and/or accredited operators. We cannot guarantee the accuracy of this data. ASBV's are designed to estimate genetic merit of animals from the data supplied. The reports are provided to assist breeders but no liability is accepted for the outcome resulting from the use of this information.

