



25th Annual On Property Lambplan Ram Sale 'Springvale' 349 Adams Lane Greenethorpe 2809

Thursday 7th September 2023
Sale starts 1 pm Sharp



AuctionsPlus

Poll Dorsets Lots 1 - 150 White Suffolks from Lot 151 - 212

Welcome to the 25th Annual Felix Rams On-property Lambplan Ram Sale.

The sale will also be simultaneously interfaced on Auction Plus.

All rams will be sold individually and in catalogue order. White Suffolks will be penned at the front of the shed to allow inspection to continue while the Poll Dorsets are being sold.

Animal Health / QA

MN3 and 2nd Generation Approved Vaccinated for Ovine Johnes Disease - Certificate No NS 21128, Ovine Brucellosis Accredited Free - Certificate No. 76316

All lambs are vaccinated with Gudair at marking, Eryvac x 2, and the rams have been given a full vaccination program with Glanvac 6 in 1, last vaccination Eryvac+B12 11/08/23 and were drenched with Trifecta 11/08/23 Felix Rams is a closed flock, and the sheep are declared to be footrot and lice free. A Sheep Health Statement will be displayed, and available if required. LPA NVDs will be provided with all rams.

Lambplan averages for the 2022 drop (all asbvs and indexes Lambplan run 01/08/23)

Averages	BWT	PWT	PFAT	PEMD	PWEC	LMY	IMF	TCP	LEQ
150 Felix PD Rams	0.27	17.9	-0.36	3.4	-16	4.5	-0.32	158.8	155.5
2022 PD Breed	0.39	14.4	-0.54	2.2	-18	3.6	-0.53	140.7	134.8
62 Felix WS Rams	0.22	19.2	0.08	3.2	-43	4.0	-0.16	16.4	163.4
2022 WS Breed	0.31	15.9	-0.27	2.2	-25	3.4	-0.34	145.4	141.6

BWT "birthweight" – lower birthweight values will produce lighter birthweight lambs

PWT "postweaning weight" - a higher pwt value ram will produce faster growing progeny

PFAT "postweaning fat" – the more negative the value for pfat, the leaner the progeny will be

PEMD "postweaning eye muscle depth" – rams with higher values for pemd will have more muscle especially in the high value loin area and hind quarter, and better overall carcass shape.

PWEC "postweaning worm egg count" – a lower (more negative) value for pwec indicates the progeny will have lower worm egg counts and be more resistant to developing a worm burden

IMF "intra muscular fat" rams with higher (more positive) imf will have better eating quality

LMY "lean meat yield" a higher lmy asbv ram will sire higher lean meat yielding lambs

Indexes are designed to help meet different breeding objectives and programs. They are simply a guide to assist in selection, however when doing so producers must consider their own breeding objective. This will involve considering your current ewe base, the environment they are run in and the target market for their progeny. Our recommendation for trade or heavy are a basic indication of the target market a ram may suit. Rodney and Isaac are happy to discuss this at any time.

We do not recommend lamb producers using Terminal Carcass Production (**TCP**) or Lamb Eating Quality (**LEQ**) for anything more than a basic guide. Both TCP (30%) and LEQ (62%) have too much emphasis on the low accuracy traits of IMF and Shearforce. This does not mean that we are not trying to improve eating quality, rather their value to producers is overdone in the calculation of these indexes. This is despite more than 95% of our offering being in the top 20% for both indexes. We believe you can achieve a better balance of traits by looking at the asbvs.

At Felix Rams almost all the important data for these rams is collected before they are 7 months of age – reflecting what you aim to do in your prime lamb enterprise. The rams are run commercially in large management groups mainly on dryland lucerne/perennial grass pasture, so their performance is what you will see in your paddocks. What you see is what you get. Our aim is to breed sound rams to efficiently produce outstanding prime lambs.

Our commitment to accurate data collection and effective management groups and their use in estimating the breeding value of rams is second to none.

Rodney, Liz, Isaac and Val Watt

NB Ram breeders. The minimum price for a ram to be individually registered as a stud ram will be \$3000. We retain the right to collect semen for our own use at our expense from any ram individually registered.

Memo of Poll Dorset Sires used for 2022 drop	
170101	By Marocara 150049, MLA Reference Flock, low birthweight -0.03, PWT 18.7 top 5%, PEMD 3.7 top 5%. Dam has been our best ET donor.
190141	By Felix 160494 (sire of world record price Poll Dorset ram), first used as lamb, early maturing outstanding growth PWT 20.4 top 1%, muscle PEMD 3.4 top 10%, imf top 5%, LEQ top 1%. Meat Elite Young Sire Team, MLA Resource Flock. Popular semen sire with progeny in 18 flocks
200009	By Felix 190141, used as a lamb, top 5% PEMD 4.1, top 5%, top 1% LEQ
200356	By Jewsharp 150014, used as a lamb, PWT 19.1 top 5%, LMY top 5%, progeny in 10 flocks, Meat Elite Young Sire Team ram
210053	By Bruan 190007, used as a lamb, lower bwt sire
210204	By Linton 160625, used as a lamb, lower bwt, top 1% imf, top 5% LEQ
210215	By Felix 190968, used as a lamb, top 5% for pwt and lmy, top 10% pemd
210346	By Bruan 190275, used as a lamb, top 5% pemd and lmy, moderate bwt, top 5% LEQ
210351	By Felix 190141, used as a lamb for spring drop, Meat Elite YST, top 5% pemd, LEQ, top 10% pwt
210373	By Felix 170101, used as a lamb, Meat Elite YST, popular semen sire, top 1% LEQ
210422	By Felix 190141, used as a lamb, top 1% pemd, top 5% lmy and LEQ
210483	By Felix 190141, used as a lamb spring drop, Meat Elite YST, popular semen sire, top 5% pemd, top 10% pwt
210540	By Felix 191112, used as lamb, lower bwt, top 5% pemd
211194	By Felix 190141, used as a lamb spring drop (ewe lambs), lower bwt, top 5% pwt
211315	By Felix 200930, used as a lamb spring drop (ewe lambs), Meat Elite YST, top 1% pwt, top 5% LEQ
BD205582	Bundara Downs 205582 by Derrynock 180067, semen sire
IL200286	Ilfracombe 200286 by Linton 160625, semen sire, good muscle, wec and eq
IV200010	Ivadene 200010 by Pepperton 180339, semen sire, very good muscle
JE190439	Jewsharp 190439 by Bundara Downs 133266, semen sire
MV190152	Melton Vale 190152 by Wunnamurra 120455, semen sire, only used in ET program
OW180425	Old Woombi 180425 by Old Woombi 170410, semen sire
WO207491	Woolumbool 207491 By Melton Vale 160114, semen sire

Memo of White Suffolk Sires used for 2022 drop	
200145	By Ashmore170986, Superwhites Young Sire Team 2022, progeny in 12 flocks, low bwt and good balance between growth, muscle and eating quality.
201156	By Felix 191175, PWT 21.4 Superwhites Young Sire Team, progeny in 16 flocks, sired top priced ram 2022 sale
210385	By Felix 200280, used as a lamb, top 1% for pwt, pemd and leq
210725	By Langley Heights 180231, used as a lamb, top 10% for pwt, pemd and imf, top 5% LEQ
210815	By Ella Matta 190030, used as lamb, top 1% LEQ, top 5% PWT, top 10% pemd, pwec, imf
210906	By Langley Heights 1802321, used as a lamb, top 5% pemd, top 5% LEQ
211102	By Felix 200145, used as lamb, top 1% imf and LEQ, top 5% pwec
211313	By Felix 200145, used as lamb for spring drop (ewe lambs), top 1% pwt and LEQ, top 5% imf
FA180178	Farrer 180178 by Felix 151229, semen sire, top 1% leq, great pwec, top 10% pwt
LH180231	Langley Heights 180231 by LH 160376, semen sire in 28 flocks, good balanced asbvs

Both our Poll Dorset and White Suffolk flocks are 5 Star for Sheep Genetics Data Quality Score.

We use a combination of young sires and well linked mature sires along with DNA testing to provide high accuracy ASBVs. Semen sales, sires in the Resource Flock, and the use of AI sires increases our linkage in the SG database and the accuracy of the ASBVs.

Catalogues with Lean Meat Yield (LMY), Intramuscular Fat (IMF) and Dressing Percentage (DRESS) on our website www.felixrams.com.au and on pen cards on sale day.

25th Felix Rams Lambplan Ram Sale 7/09/23					Trait leaders			Top 1%	Red Top 5%	Blue Top 10%	Green Top 20%							
					Poll Dorsets Lot 1-120			Spring drop Poll Dorsets Lots 117-150			White Suffolks Lots 151-212							
Lot	Animal	DNA	s/t	DOB	BWT	PWT	PFAT	PEMD	PWEC	TCP	LEQ	LE_DIR	Sire	IMF	SHRF	DRESS	LMY	Video
Poll Dorsets																		
1	220015		1	24/06	0.28	18.4	0.3	4.1	-26	157.0	155.3	0.6	210540	-0.26	3.3	3.3	4.4	https://youtu.be/0AnZ6ldaD7k
2	220529	*	2	27/06	0.29	18.3	-0.4	4.2	-39	160.2	154.9	0.7	IV200011	-0.70	5.6	3.5	5.7	https://youtu.be/O0iLmacZBiA
3	220170	*	2	21/06	0.45	20.1	-0.3	4.0	3	168.0	158.0	0.8	210422	-0.78	3.0	3.5	5.4	https://youtu.be/bRd5VclqWTM
4	220315		2	24/06	0.4	20.4	-1.0	3.0	7	160.7	150.3	-0.3	210215	-0.81	5.6	3.1	5.9	https://youtu.be/fXu5XG23IQQ
5	220261		2	23/06	0.45	19.3	-1.0	3.0	15	157.9	147.2	-1.1	210215	-0.78	5.1	3.2	5.6	https://youtu.be/F1pSG0uIEFU
6	220071		1	29/06	0.35	18.1	-0.9	3.5	-11	165.7	163.3	0.9	200009	-0.23	1.3	3.0	5.2	https://youtu.be/1HN3V8fwB_A
7	220431		3	26/06	0.31	19.5	-0.5	3.3	9	158.6	152.4	1.0	200356	-0.42	5.6	3.3	5.1	https://youtu.be/JK5CXA8U71o
8	220555	*	2	27/06	0.51	17.6	0.3	3.6	-18	161.0	160.0	0.1	IL200292	-0.14	0.0	3.3	3.4	https://youtu.be/845TqxeU2is
9	220047	*	1	27/06	0.27	17.3	0.3	4.3	61	163.4	159.2	1.4	MV190152	0.18	1.0	3.2	3.9	https://youtu.be/M2hRgm8l6mY
10	220298		2	23/06	0.32	17.2	0.3	3.3	-15	154.7	152.7	1.0	210053	-0.22	2.0	3.2	3.5	https://youtu.be/q61A6am9p-A
11	220993		2	05/07	0.2	17.2	-0.5	3.8	-7	159.9	153.8	1.5	210422	-0.53	3.8	3.2	5.0	https://youtu.be/o312ypDS8D8
12	220402		2	25/06	0.26	19.5	0.3	3.9	43	165.5	160.7	1.8	190141	-0.02	1.1	3.6	4.3	https://youtu.be/agdCclXKFW4
13	221071		2	11/07	0.2	17.4	-0.5	3.5	8	153.3	145.2	1.6	200009	-0.61	5.1	3.0	5.0	https://youtu.be/uC-nFGbVFY
14	220792	*	2	29/06	0.39	17.7	-0.1	3.3	-30	150.1	144.5	-0.4	BD205582	-0.65	5.0	3.1	4.4	https://youtu.be/rj24HY85-VE
15	220287	*	3	23/06	0.22	18.4	0.0	4.2	-53	165.4	161.0	1.7	210540	-0.71	3.8	3.5	5.1	https://youtu.be/IuUl7nXfVAc
16	220202		3	22/06	0.42	20.2	-0.4	3.4	21	162.4	153.3	1.2	210422	-0.57	4.9	3.2	5.4	https://youtu.be/doy2g2vSXng
17	220291		3	23/06	0.29	17.8	-0.5	4.1	-9	161.0	154.0	1.3	200356	-0.62	5.3	3.5	5.5	https://youtu.be/l2a9RqqR4n4
18	220374		2	25/06	0.24	18.8	-0.3	2.9	11	159.1	156.6	1.5	190141	-0.08	1.7	2.9	4.2	https://youtu.be/LZ9vtPJXdgE
19	220316		2	24/06	0.36	18.4	-0.8	3.0	-7	161.3	156.8	1.5	200356	-0.40	3.2	3.0	4.7	https://youtu.be/whzPherlywk
20	220148		3	20/06	0.42	21.0	-0.5	2.7	-17	160.8	155.5	1.1	210053	-0.53	4.5	3.2	4.8	https://youtu.be/SSJRu3ZXqls
21	221048		2	10/07	0.15	17.5	-0.4	3.0	-10	156.6	156.4	1.3	210204	-0.02	1.6	2.8	4.0	https://youtu.be/tAJ-1TbTOgs

25th Felix Rams Lambplan Ram Sale 7/09/23					Trait leaders			Top 1%	Red Top 5%	Blue Top 10%	Green Top 20%							
Poll Dorsets Lot 1-120					Spring drop Poll Dorsets Lots 117-150					White Suffolks Lots 151-212								
Lot	Animal	DNA	s/t	DOB	BWT	PWT	PFAT	PEMD	PWEC	TCP	LEQ	LE_DIR	Sire	IMF	SHRF	DRESS	LMY	Video
22	220030		1	26/06	0.25	18.1	-0.7	2.9	-17	159.7	159.3	0.8	210204	-0.10	1.7	2.9	4.4	https://youtu.be/TniyN8mqICM
23	220172		2	21/06	0.29	18.6	-0.7	2.5	2	157.9	156.3	0.9	210204	-0.07	1.8	2.8	4.3	https://youtu.be/KOTC_Mdm2IA
24	220250		2	22/06	0.24	16.3	0.2	4.5	-9	158.3	152.5	0.9	210422	-0.51	3.0	3.4	4.6	https://youtu.be/jKx4laUSgTw
25	220776	*	3	29/06	0.52	17.4	-0.7	3.8	-50	165.6	165.6	-0.5	IL200296	-0.31	0.1	3.0	4.6	https://youtu.be/-blGkvOJT58
26	220052		2	28/06	0.26	17.6	0.2	3.0	-15	153.4	150.5	0.6	BD205582	-0.31	2.8	3.3	3.7	https://youtu.be/jpDeS6hf7vY
27	220017	*	1	25/06	0.21	17.7	-0.6	2.8	20	155.5	152.5	-1.2	WO207491	-0.06	1.1	2.9	4.0	https://youtu.be/kOWLiWNwhjA
28	220171	*	2	21/06	0.28	17.9	0.0	4.8	-18	166.8	161.5	1.3	210422	-0.53	2.1	3.7	5.0	https://youtu.be/Q1cfBVl0PiY
29	220849		2	30/06	0.37	18.3	-0.5	3.3	6	159.0	152.8	0.4	200356	-0.45	3.8	3.4	5.0	https://youtu.be/xXaFFuOvz9s
30	220225		2	22/06	0.37	18.8	-0.6	2.3	-11	155.0	152.8	0.8	200356	-0.23	3.2	2.9	4.5	https://youtu.be/120epFYgwW0
31	220412		2	25/06	0.29	18.3	-0.6	3.1	22	157.4	149.8	-0.2	210215	-0.45	3.0	3.0	4.9	https://youtu.be/emPNtVpdj2c
32	220312	*	2	24/06	0.34	18.8	-0.6	3.2	-17	162.0	164.9	-0.7	JE190439	0.17	0.0	3.3	4.1	https://youtu.be/RvSh6Fn88Zk
33	220380		2	25/06	0.26	17.8	-0.3	3.1	-7	158.2	155.0	1.3	210053	-0.27	2.5	3.1	4.2	https://youtu.be/qYtpQfRCx6E
34	220297		2	23/06	0.34	18.1	-0.4	3.0	11	155.3	149.0	0.6	200356	-0.42	4.1	3.2	4.7	https://youtu.be/WVMRO2Z13d0
35	220732	*	4	29/06	0.19	16.6	0.1	4.5	-44	161.3	163.9	0.5	IL200295	-0.03	0.9	3.8	4.1	https://youtu.be/SS-LdLFTI4Y
36	220518		3	27/06	0.42	18.9	-0.4	3.4	-39	161.5	161.2	1.2	IL200287	-0.25	2.7	3.4	4.5	https://youtu.be/lz6U1fablk
37	221115		1	14/07	0.37	19.5	-1.1	3.0	7	157.7	149.8	-0.8	210215	-0.60	5.0	3.0	5.6	https://youtu.be/DfkQkAb6CMc
38	220249		2	22/06	0.3	16.9	-0.4	3.8	-20	156.6	151.1	0.9	210422	-0.57	3.9	3.1	4.9	https://youtu.be/iDPr1-cF9vM
39	220164		3	20/06	0.24	16.9	-0.4	4.3	-32	161.3	155.2	1.0	210422	-0.72	3.6	3.2	5.3	https://youtu.be/YElu-vhQYKo
40	220453		2	26/06	0.44	17.7	-0.6	3.4	-21	161.2	156.4	1.2	200356	-0.52	3.3	3.1	4.6	https://youtu.be/V23WC1C3h8M
41	221113		1	14/07	0.13	16.9	-0.4	2.8	-20	154.9	155.3	0.9	210373	-0.07	1.2	2.9	3.9	https://youtu.be/00NV_hKgz2E
42	220147		3	20/06	0.36	18.5	-0.4	2.7	-25	155.8	152.3	1.1	210053	-0.43	3.4	3.0	4.2	https://youtu.be/tc616cf2I68
43	221224		3	15/07	0.24	18.7	-0.9	2.4	-29	150.5	147.4	1.5	210540	-0.44	5.8	2.5	4.9	https://youtu.be/OtjWW8tJlr0

25th Felix Rams Lambplan Ram Sale 7/09/23					Trait leaders			Top 1%	Red Top 5%	Blue Top 10%	Green Top 20%							
Poll Dorsets Lot 1-120					Spring drop Poll Dorsets Lots 117-150					White Suffolks Lots 151-212								
Lot	Animal	DNA	s/t	DOB	BWT	PWT	PFAT	PEMD	PWEC	TCP	LEQ	LE_DIR	Sire	IMF	SHRF	DRESS	LMY	Video
44	220501		2	26/06	0.28	17.2	-0.1	3.5	-29	160.4	159.4	2.2	190141	-0.23	1.4	3.0	4.1	https://youtu.be/JQOshhcA_Mg
45	220498		3	26/06	0.27	18.8	-0.4	3.3	-2	159.6	154.7	1.3	200356	-0.39	4.7	3.5	5.0	https://youtu.be/Vsf7fn3Pgsw
46	221084		2	12/07	0.24	17.2	-0.7	2.9	-2	155.3	151.8	1.5	200356	-0.27	4.0	2.8	4.6	https://youtu.be/XT-6gN7udm0
47	220443		2	26/06	0.35	17.6	-0.6	3.6	-6	161.8	156.3	1.0	200356	-0.47	4.0	3.4	5.1	https://youtu.be/B0RLQVYE7h4
48	220897		2	02/07	0.35	17.0	-0.2	4.0	-28	160.6	158.8	0.3	210346	-0.30	1.8	3.3	4.4	https://youtu.be/B0RLQVYE7h4
49	220227		2	22/06	0.16	16.8	-0.4	3.0	-18	151.0	149.8	0.8	210540	-0.18	3.1	2.6	4.1	https://youtu.be/NrxbcB5Q8YE
50	220862		4	28/06	0.42	18.0	-0.7	2.9	-33	159.5	161.2	0.2	IL200297	-0.03	1.5	3.1	4.3	https://youtu.be/pFKvETyokMo
51	220039		1	26/06	0.13	16.6	0.1	4.1	-36	158.2	155.5	1.6	IV200010	-0.45	3.4	3.5	4.4	https://youtu.be/V8mbBEin7Bg
52	220961		2	03/07	0.29	16.8	-0.9	3.8	-40	161.8	156.8	0.5	210346	-0.68	3.7	3.0	5.7	https://youtu.be/grvFrMLSct0
53	221158		1	16/07	0.36	17.6	-0.7	3.4	-9	160.0	154.7	1.1	200356	-0.48	4.2	3.2	5.1	https://youtu.be/oEZ9r9Z1Eic
54	220522	*	3	27/06	0.56	19.4	-0.6	4.1	-21	167.7	162.3	-1.0	IL200289	-0.56	2.4	3.8	5.4	https://youtu.be/OCvmzryboHg
55	221007		1	05/07	0.17	17.6	-0.3	3.5	19	159.6	154.4	1.1	200009	-0.26	1.7	3.3	4.6	https://youtu.be/2BXIS15T_Dc
56	220272		2	23/06	0.39	17.8	-0.2	3.1	-47	158.6	158.4	0.8	210346	-0.31	2.0	3.0	4.1	https://youtu.be/UsPKa_IUcR8
57	220063	*	1	28/06	0.37	17.6	0.2	3.3	17	157.6	157.8	-1.3	WO207491	0.23	0.0	3.3	3.4	https://youtu.be/u1aRuqGynzo
58	220578		3	27/06	0.1	15.9	-0.4	4.3	-25	156.4	151.6	1.5	210346	-0.55	5.2	3.3	5.1	https://youtu.be/QLQ-qmQ74rg
59	220853		2	30/06	0.12	18.0	-0.1	3.6	-17	157.3	155.2	1.4	210540	-0.26	3.1	3.3	4.3	https://youtu.be/vff5Hjz2IEM
60	220430		3	26/06	0.25	18.2	-0.2	3.4	25	156.7	150.1	1.0	200356	-0.33	4.6	3.3	4.6	https://youtu.be/yq_wuobw-50
61	220121	*	2	19/06	0.31	18.3	0.4	2.9	-28	152.2	153.7	0.9	210373	-0.01	1.5	3.0	3.0	https://youtu.be/TRmgGp1iz9w
62	220554	*	2	27/06	0.35	15.3	0.3	4.1	-54	161.8	164.8	0.6	IL200291	-0.06	-1.1	3.4	3.0	https://youtu.be/31sY8WqqV-0
63	220280		2	23/06	0.001	16.5	-0.3	4.1	-52	155.8	155.6	0.9	210540	-0.35	3.3	3.3	4.6	https://youtu.be/zudVxqetT8k
64	220325		3	24/06	0.17	17.0	0.2	3.8	17	153.4	147.1	1.3	200356	-0.36	4.7	3.5	4.2	https://youtu.be/46MSmUw5QzY
65	220338		2	24/06	0.16	17.6	0.1	5.0	-1	167.7	162.3	1.6	200009	-0.42	2.4	4.1	5.1	https://youtu.be/kSq1g22S46Q

25th Felix Rams Lambplan Ram Sale 7/09/23					Trait leaders		Top 1%	Red Top 5%	Blue Top 10%	Green Top 20%								
Poll Dorsets Lot 1-120					Spring drop Poll Dorsets Lots 117-150					White Suffolks Lots 151-212								
Lot	Animal	DNA	s/t	DOB	BWT	PWT	PFAT	PEMD	PWEC	TCP	LEQ	LE_DIR	Sire	IMF	SHRF	DRESS	LMY	Video
66	220411		2	25/06	0.28	18.3	-0.6	3.7	12	160.9	153.1	-0.3	210215	-0.53	3.2	3.2	5.3	https://youtu.be/gMb9_mndwX4
67	220646		2	28/06	0.31	18.1	-0.5	2.8	7	155.7	151.5	1.2	200356	-0.26	4.1	3.0	4.6	https://youtu.be/m52sD5C--Ts
68	220276		3	23/06	0.21	16.8	-0.4	3.0	-41	154.8	154.8	1.2	210373	-0.25	2.6	3.0	4.0	https://youtu.be/dcdq9xm-kZk
69	220711		2	29/06	0.22	17.0	-0.4	3.1	-28	156.6	157.7	0.9	210204	-0.06	1.3	3.0	4.0	https://youtu.be/QCOaNeqioRQ
70	220329		3	24/06	0.24	16.4	-0.3	3.1	-37	154.3	154.4	1.3	210346	-0.20	2.0	2.8	3.8	https://youtu.be/DN_DrkiAyiM
71	220137		2	20/06	0.23	17.7	-0.8	2.8	-35	158.6	160.8	1.0	210373	-0.02	1.2	2.9	4.2	https://youtu.be/g3RIK1n1MFA
72	220566		2	27/06	0.29	17.7	-0.2	3.8	-18	156.7	149.8	1.9	210422	-0.66	5.0	3.1	4.9	https://youtu.be/45YQba6jCBA
73	220900		2	02/07	0.33	18.1	-0.8	2.9	-9	157.9	154.9	0.7	210204	-0.27	3.3	3.0	4.8	https://youtu.be/oanADCsKUuo
74	220800		2	29/06	0.31	18.6	-0.7	2.8	-13	153.1	147.7	-0.4	210215	-0.51	4.6	2.8	4.8	https://youtu.be/28fT_5qk_SM
75	220579		2	27/06	0.29	16.1	-0.2	3.4	-18	157.6	158.6	0.8	IL200293	0.01	0.1	3.1	3.6	https://youtu.be/l8wygXh32f8
76	221154		3	15/07	0.16	16.9	-0.5	3.0	-32	158.6	157.6	1.9	210373	-0.26	2.2	2.9	4.2	https://youtu.be/FUdre-B5_R0
77	220409		2	25/06	0.38	16.9	0.0	3.8	-19	159.0	158.4	1.3	IL200286	-0.13	1.8	3.3	3.9	https://youtu.be/7l66HrEvD8
78	221230		3	18/07	0.27	17.2	-0.3	3.3	5	159.3	157.2	1.4	200009	-0.09	1.3	3.1	4.3	https://youtu.be/2hiDMKuwllE
79	221051		2	11/07	0.24	17.3	-0.4	3.6	-24	159.1	154.7	1.7	210422	-0.51	3.4	3.0	4.9	https://youtu.be/ebQXA8XVRqI
80	221147	*	2	15/07	0.15	18.3	0.2	3.9	-22	165.1	166.7	1.3	210373	0.04	0.3	3.7	3.9	https://youtu.be/BUjZPEER4dA
81	220353	*	3	24/06	0.32	19.1	-0.2	2.6	-29	158.2	156.9	1.3	210373	-0.27	1.7	3.0	3.9	https://youtu.be/Fxo6yWPLdI8
82	221211	*	2	17/07	0.21	19.7	-0.9	2.7	-41	159.3	157.1	1.5	210373	-0.45	3.7	3.0	5.1	https://youtu.be/7P43ARW6XZM
83	220141		2	20/06	0.26	17.1	-0.6	2.7	-48	155.5	156.1	1.8	210346	-0.25	2.7	2.6	4.3	https://youtu.be/JxBUf8x7nqc
84	221162		2	16/07	0.04	17.1	-0.3	3.1	-39	156.4	158.5	1.4	210373	-0.06	1.6	3.4	3.8	https://youtu.be/-V-9AgRWYwc
85	220558		3	27/06	0.25	17.8	-0.4	3.6	1	157.1	151.7	1.4	200356	-0.41	4.4	3.1	4.8	https://youtu.be/rBtFBRhi4Dc
86	220645		2	28/06	0.33	18.4	-0.6	2.6	17	155.2	150.0	1.2	200356	-0.27	4.4	2.9	4.7	https://youtu.be/ghopKGEitIs
87	220622		2	28/06	0.21	16.2	0.6	4.6	-33	157.0	153.9	0.2	IV200014	-0.45	2.9	3.7	4.2	https://youtu.be/5zYGu0i1Ozk

25th Felix Rams Lambplan Ram Sale 7/09/23					Trait leaders			Top 1%	Red Top 5%	Blue Top 10%	Green Top 20%							
Poll Dorsets Lot 1-120					Spring drop Poll Dorsets Lots 117-150					White Suffolks Lots 151-212								
Lot	Animal	DNA	s/t	DOB	BWT	PWT	PFAT	PEMD	PWEC	TCP	LEQ	LE_DIR	Sire	IMF	SHRF	DRESS	LMY	Video
88	221207	*	2	16/07	0.23	16.4	-0.7	3.4	-34	151.9	147.5	1.3	210346	-0.58	6.2	2.9	5.0	https://youtu.be/9gHkV-789qA
89	220006		1	20/06	0.29	16.6	0.1	3.8	-22	158.5	156.6	1.2	210422	-0.26	1.6	3.1	4.0	https://youtu.be/_i-WB1auC3I
90	220802		2	29/06	0.32	16.6	-0.7	3.6	-39	159.1	156.2	0.5	210346	-0.49	2.8	2.9	5.0	https://youtu.be/LRws-8f9Xms
91	221023		3	05/07	0.31	16.8	-0.5	3.4	-34	156.0	151.9	0.9	210346	-0.55	3.2	2.7	4.7	https://youtu.be/R_XL8ygoY40
92	220623		2	28/06	0.28	17.2	0.2	3.8	-21	155.5	151.1	0.2	IV200015	-0.48	3.8	3.4	4.4	https://youtu.be/hD3a7RSsc1s
93	221151		2	15/07	0.07	17.8	-0.2	3.3	-36	161.1	162.7	2.2	210373	-0.08	0.6	3.3	4.0	https://youtu.be/qyKvnH0d1Og
94	220523	*	3	27/06	0.45	17.3	-0.7	4.3	-40	168.2	166.4	-0.1	IL200290	-0.39	-0.2	3.5	4.7	https://youtu.be/ifij0bYf5w8
95	220499		3	26/06	0.2	17.3	-0.4	3.7	-10	159.8	155.5	1.3	200356	-0.40	4.0	3.6	4.9	https://youtu.be/62_NmldLIVQ
96	220520		3	27/06	0.48	18.2	-0.6	2.9	-48	162.9	166.0	1.0	IL200288	-0.03	0.4	3.1	4.2	https://youtu.be/pldj4882lfk
97	220572		3	27/06	0.37	18.5	-0.4	3.0	-30	157.6	154.3	0.9	IV200013	-0.45	3.8	3.0	4.8	https://youtu.be/gKHsnDCZ8BQ
98	221057		2	11/07	0.06	16.6	-0.4	3.0	-21	156.2	154.9	2.4	210373	-0.23	2.2	3.0	3.8	https://youtu.be/VatXY3shQWE
99	220025		1	25/06	0.14	17.5	-0.6	3.6	-27	162.6	162.5	0.9	210373	-0.17	0.8	3.2	4.5	https://youtu.be/wCJ5qPyKScw
100	220180		3	21/06	0.04	17.8	-0.2	4.3	-37	159.7	158.4	1.1	210540	-0.32	3.4	3.4	4.9	https://youtu.be/nLoSmGDWrF4
101	220395		2	25/06	0.19	17.2	-0.4	2.9	-39	152.3	150.6	1.1	210053	-0.38	4.1	2.9	4.2	https://youtu.be/fukVwTiqedl
102	220896		2	02/07	0.34	16.8	-0.6	3.8	-40	160.9	159.2	0.4	210346	-0.40	2.2	3.2	4.9	https://youtu.be/xjOayVOV6U
103	220669		3	28/06	0.26	16.2	-0.5	3.3	-27	161.6	162.4	1.2	IL200294	-0.07	-0.8	3.0	3.8	https://youtu.be/CWp7h7rLAFg
104	220852	*	3	29/06	0.23	16.5	-0.2	3.3	-41	154.5	150.4	1.2	210346	-0.60	3.8	2.8	4.3	https://youtu.be/iD_5ISX9xhU
105	220321		2	24/06	0.1	16.4	0.2	3.3	-25	150.6	150.0	1.7	210373	-0.18	2.7	3.0	3.4	https://youtu.be/TzyD-n8pFnI
106	220760		3	29/06	0.34	17.0	-0.1	3.3	-19	154.1	151.9	0.1	210053	-0.26	2.3	3.1	3.8	https://youtu.be/dy9m90i6vkY
107	220478		3	26/06	0.2	17.2	0.2	2.9	-16	153.5	153.8	0.9	210204	-0.02	1.2	2.9	3.4	https://youtu.be/MRhhVsgGlnE
108	220626		2	28/06	0.31	18.4	-0.6	3.1	-4	159.2	153.2	0.1	OW180426	-0.51	2.7	3.2	4.7	https://youtu.be/-5k_zgodpTs
109	221160		2	16/07	0.33	19.5	-0.2	2.6	2	158.8	157.4	1.2	190141	-0.04	1.5	3.0	4.1	https://youtu.be/IHvqi9kle9s

25th Felix Rams Lambplan Ram Sale 7/09/23					Trait leaders		Top 1%	Red Top 5%	Blue Top 10%	Green Top 20%								
Poll Dorsets Lot 1-120					Spring drop Poll Dorsets Lots 117-150					White Suffolks Lots 151-212								
Lot	Animal	DNA	s/t	DOB	BWT	PWT	PFAT	PEMD	PWEC	TCP	LEQ	LE_DIR	Sire	IMF	SHRF	DRESS	LMY	Video
110	221103		2	14/07	0.29	18.4	-0.7	2.9	4	154.4	148.0	0.0	210215	-0.49	4.6	3.0	5.0	https://youtu.be/1VO1vCV-A08
111	220350		3	24/06	0.27	17.0	0.3	4.0	-58	162.1	165.6	0.8	IL200286	-0.07	-0.4	3.7	3.5	https://youtu.be/SJSE_0Or8G4
112	221210		2	17/07	0.16	18.2	0.0	3.9	-29	163.0	163.1	1.4	210373	-0.14	1.1	3.5	4.2	https://youtu.be/A65HiDn25Is
113	220953	*	3	03/07	0.28	17.3	-0.5	4.3	-1	162.9	154.9	1.3	210422	-0.65	3.1	3.3	5.1	https://youtu.be/0KuJsF9-Jqw
114	220489		3	26/06	0.13	17.0	-1.0	3.1	-46	160.9	159.0	0.8	OW180425	-0.48	2.1	3.2	5.1	https://youtu.be/nbpsmua3A4Q
115	220571		3	27/06	0.34	18.5	-0.1	3.4	-16	158.6	154.4	0.9	IV200012	-0.42	3.4	3.2	4.6	https://youtu.be/52Vx_bg-9JM
116	220149		2	20/06	0.06	16.4	-0.2	3.4	-44	152.4	153.1	1.9	210540	-0.21	3.4	2.8	4.2	https://youtu.be/uYeLg5Jzv14
117	221518		1	11/08	0.4	19.4	-0.3	2.9	0	155.9	148.7	1.3	210351	-0.56	5.0	2.9	4.9	https://youtu.be/TcDjU1ceLjg
118	221530		2	13/08	0.16	18.4	-0.4	3.9	-10	159.1	154.8	0.7	170101	-0.40	4.8	3.6	5.2	https://youtu.be/_tMEheeaIA
119	221538		2	15/08	0.24	18.7	-0.4	2.9	-14	155.1	153.3	1.0	170101	-0.20	3.7	3.0	4.4	https://youtu.be/VkuWk5ynDzw
120	221537		2	15/08	0.17	19.1	-0.6	3.3	-11	161.2	158.9	0.7	170101	-0.23	3.1	3.4	4.8	https://youtu.be/i2Oww0LLq-U
121	221392		1	22/08	0.21	18.7	-0.6	3.3	-33	160.9	159.7	1.3	211315	-0.30	3.4	3.2	4.9	https://youtu.be/xgwmEUWRWm
122	221356	*	1	19/08	0.18	19.7	-0.3	3.3	-12	164.2	161.7	1.8	210483	-0.25	2.2	3.5	4.6	https://youtu.be/zxB-xD_RGw4
123	221637		2	29/08	0.24	18.0	-0.3	3.4	-9	158.6	155.4	0.7	210351	-0.29	2.2	3.2	4.6	https://youtu.be/LH08PyldiOI
124	221577		2	17/08	0.36	17.7	-0.1	3.4	-16	154.8	149.8	1.4	210351	-0.49	4.2	2.9	4.5	https://youtu.be/Q5LEz1CMY3A
125	221564		3	17/08	0.34	18.3	0.7	3.2	0	149.9	146.2	1.1	210351	-0.24	3.7	2.9	3.5	https://youtu.be/LJggyUZ57kl
126	221710		1	30/08	0.22	19.1	-0.4	3.0	11	159.1	154.0	1.7	211194	-0.31	3.4	3.3	4.5	https://youtu.be/F1iz3H-D-kY
127	221459		2	25/08	0.16	18.4	-0.5	3.9	-5	164.6	160.2	1.5	211194	-0.36	2.9	3.7	5.0	https://youtu.be/IOVSM8RxtIE
128	221531		2	13/08	0.2	19.1	-0.9	3.2	9	158.7	152.3	0.8	170101	-0.44	5.2	3.3	5.4	https://youtu.be/VNP9Y05mOqQ
129	221420	*	1	24/08	0.06	16.5	-0.2	3.3	-43	155.9	155.7	2.1	210483	-0.28	3.0	3.2	4.1	https://youtu.be/Tfjf7xhHhV0
130	221357	*	1	19/08	0.24	19.2	0.2	3.0	-5	160.7	156.4	1.5	210483	-0.36	2.0	3.6	4.1	https://youtu.be/gDtaxPCg5X8
131	221697		1	28/08	0.38	19.2	-0.9	3.0	-33	161.7	160.2	0.4	211315	-0.34	3.2	3.1	5.1	https://youtu.be/vkwEwd0XueY

25th Felix Rams Lambplan Ram Sale 7/09/23					Trait leaders			Top 1%	Red Top 5%	Blue Top 10%	Green Top 20%							
Poll Dorsets Lot 1-120					Spring drop Poll Dorsets Lots 117-150					White Suffolks Lots 151-212								
Lot	Animal	DNA	s/t	DOB	BWT	PWT	PFAT	PEMD	PWEC	TCP	LEQ	LE_DIR	Sire	IMF	SHRF	DRESS	LMY	Video
132	221528		2	13/08	0.25	19.3	0.0	3.3	-10	158.1	154.3	1.5	210351	-0.35	3.5	3.3	4.5	https://youtu.be/Sz8f3hwYP7c
133	221644		2	30/08	0.4	18.4	-0.3	2.8	-16	155.7	153.5	1.4	200356	-0.25	3.8	2.8	4.4	https://youtu.be/ilvZ5Tf_0sc
134	221463		1	25/08	0.39	18.8	-1.1	2.9	-21	162.0	158.3	1.1	211315	-0.44	3.4	3.0	5.3	https://youtu.be/xyPHieGBwFo
135	221694		2	28/08	0.19	18.3	-0.2	3.1	32	160.5	156.2	1.5	211194	-0.07	1.2	3.3	3.9	https://youtu.be/UdS3gnRy2AI
136	221441		1	25/08	0.39	19.4	-0.2	2.9	-44	158.1	156.9	1.3	210483	-0.37	4.4	3.2	4.6	https://youtu.be/EV5oEMb5AH4
137	221410	*	1	24/08	0.17	18.4	0.0	2.6	-6	151.9	149.4	1.5	210373	-0.20	3.4	3.1	3.7	no video
138	221362		1	20/08	0.25	18.9	-1.2	3.0	-15	162.1	158.3	2.0	211315	-0.40	3.7	2.8	5.5	https://youtu.be/SEYhwExaPo8
139	221338	*	1	16/08	0.44	21.0	-1.1	3.1	-34	170.2	167.2	1.3	211194	-0.45	3.2	3.4	5.7	https://youtu.be/stHITU4ihzc
140	221559		2	16/08	0.25	19.3	-0.6	4.1	17	164.6	155.7	1.1	200356	-0.60	5.2	3.8	5.8	https://youtu.be/ie_IRH3T5Uw
141	221600		2	20/08	-0.02	17.2	-0.1	3.9	-15	157.8	156.5	1.5	170101	-0.17	3.1	3.6	4.4	https://youtu.be/mj9QRyo8n1A
142	221612		2	20/08	0.26	16.6	-0.4	4.1	2	163.8	160.3	1.1	200009	-0.23	1.3	3.3	4.8	https://youtu.be/XKSa9rAvDfM
143	221477		1	26/08	0.28	19.2	-1.1	2.3	-23	157.9	155.7	1.2	211315	-0.32	4.0	2.8	5.0	https://youtu.be/xClroUrPYPY
144	221445	*	2	25/08	0.15	17.5	0.9	4.3	13	158.2	153.2	2.1	210483	-0.26	3.6	4.0	3.5	https://youtu.be/iLGUjY_ibfM
145	221361	*	1	19/08	0.14	18.5	-0.8	1.9	-21	156.6	159.8	1.7	210373	0.17	1.0	2.8	3.8	https://youtu.be/w26MzicHMFg
146	221326	*	1	11/08	0.45	20.8	-1.3	2.8	-30	168.7	167.5	-0.1	211315	-0.27	1.3	3.0	5.3	https://youtu.be/nFmkKCx-1z0
147	221328	*	2	12/08	0.18	18.2	-0.6	2.7	-31	159.8	162.9	1.7	211315	0.08	1.5	3.2	4.3	https://youtu.be/OjLePZjwhwE
148	221536		2	15/08	0.14	18.0	-0.5	3.3	-9	158.7	156.6	0.7	170101	-0.19	2.8	3.2	4.6	https://youtu.be/rERlgzQLNs
149	221384		2	21/08	0.25	18.5	-0.7	2.9	2	158.2	152.8	1.6	211194	-0.39	3.8	2.8	4.9	https://youtu.be/DjqHCiC1w9I
150	221419		2	24/08	0.11	18.3	-0.9	3.0	-14	158.6	154.8	1.9	211194	-0.38	4.2	3.1	5.0	https://youtu.be/Ofd0LI3Cgcw
White Suffolks																		
151	220681		2	28/06	0.27	19.4	0.4	3.6	-42	164.1	165.5	2.2	210815	-0.10	1.0	3.4	3.9	https://youtu.be/yeBYHo4OBvs

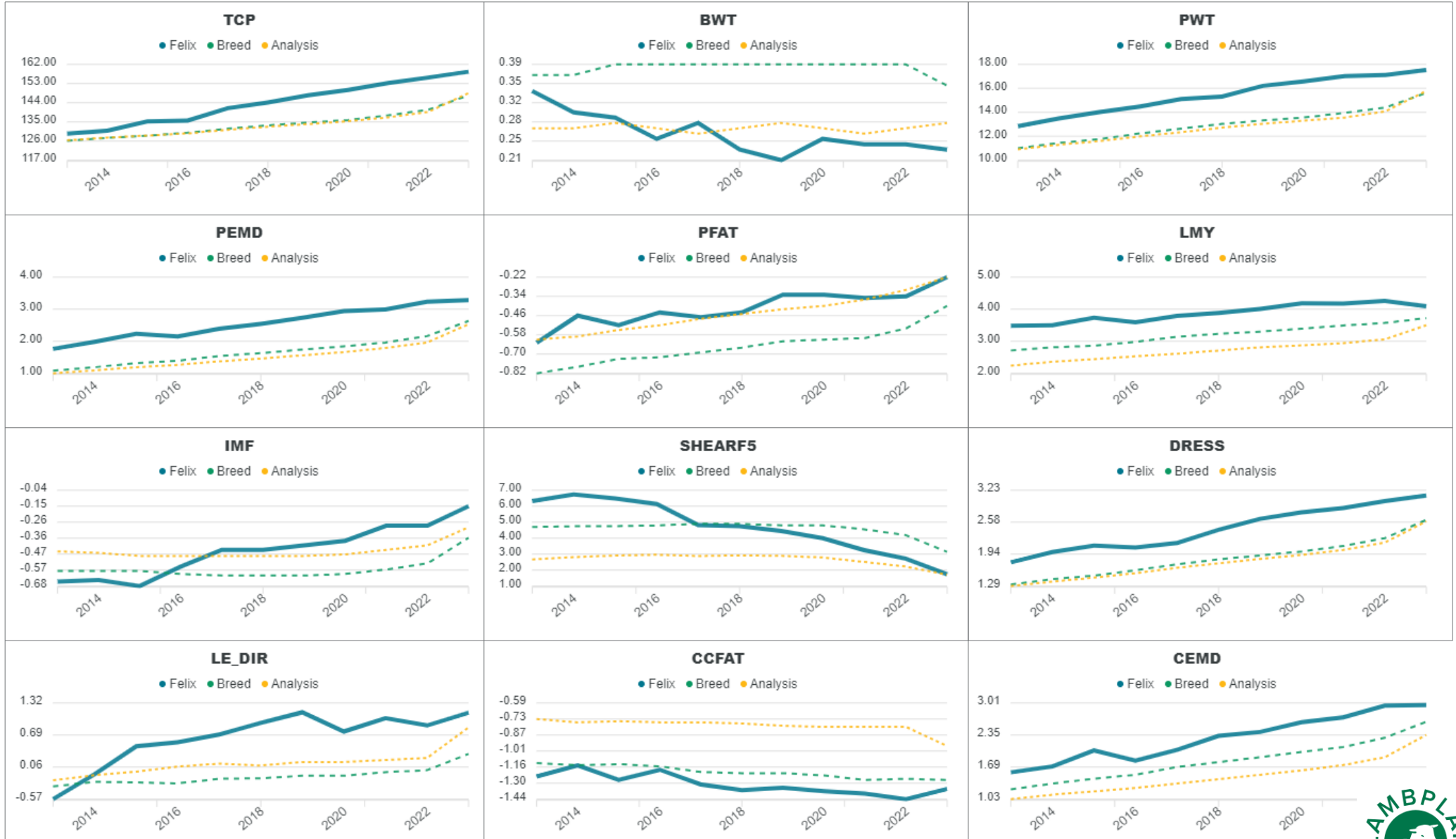
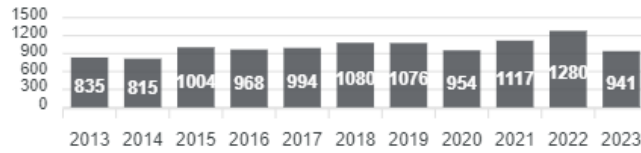
25th Felix Rams Lambplan Ram Sale 7/09/23						Trait leaders		Top 1%	Red Top 5%	Blue Top 10%	Green Top 20%							
Poll Dorsets Lot 1-120						Spring drop Poll Dorsets Lots 117-150						White Suffolks Lots 151-212						
Lot	Animal	DNA	s/t	DOB	BWT	PWT	PFAT	PEMD	PWEC	TCP	LEQ	LE_DIR	Sire	IMF	SHRF	DRESS	LMY	Video
152	220358	*	2	25/06	0.27	20.3	-0.2	2.5	-21	159.7	157.6	3.1	201156	-0.28	2.0	2.8	4.3	https://youtu.be/6sz3Alj4r4Q
153	220996		3	05/07	0.26	19.3	-0.4	2.7	-23	162.2	159.8	3.1	201156	-0.32	0.7	2.8	4.2	https://youtu.be/9pHBxcKn_iM
154	220865		2	01/07	0.4	20.4	0.0	2.6	-53	162.5	163.8	2.9	201156	-0.21	0.8	3.0	4.0	https://youtu.be/vYYg-KJ-uly
155	220610	*	2	27/06	0.36	21.4	0.1	4.5	-46	172.9	168.3	1.0	210385	-0.67	1.8	4.0	5.4	https://youtu.be/d0MKjMDCzkM
156	220114		2	19/06	0.22	19.0	0.5	4.1	-30	164.0	159.1	2.2	210385	-0.57	1.9	3.5	4.5	https://youtu.be/YYDIlzDk6ek
157	220673		2	28/06	0.23	19.2	0.2	3.0	-19	159.8	159.5	2.9	210725	-0.09	0.8	3.1	3.8	https://youtu.be/kA50F2DtYeU
158	221018	*	1	09/07	-0.03	18.7	0.4	3.4	-69	162.8	168.4	3.0	210725	0.05	-1.3	3.4	3.3	https://youtu.be/69HCl8SVVDE
159	220305		2	24/06	0.24	19.0	-0.4	2.7	-42	163.8	166.9	2.5	210815	0.03	-0.2	2.9	4.2	https://youtu.be/WUaZwJ0-Wvs
160	220303	*	3	23/06	0.37	21.1	-0.1	2.8	-22	168.0	166.5	3.0	201156	-0.21	-0.2	3.0	3.9	https://youtu.be/gGu6VeM34E
161	220357	*	2	25/06	0.38	20.6	0.2	2.7	-3	161.4	156.5	2.7	201156	-0.38	0.5	2.8	4.0	https://youtu.be/eZAPEN5qDo8
162	221202	*	2	13/06	0.07	17.6	0.2	4.3	-37	160.3	160.0	1.4	210906	-0.23	3.7	3.8	4.8	https://youtu.be/HSDr4GKZAcw
163	221305	*	1	16/06	0.25	18.3	-0.1	3.1	-46	156.0	152.9	1.5	211102	-0.55	3.5	3.1	4.5	https://youtu.be/CF8u5QE4e7M
164	220956	*	2	03/07	0.24	19.1	-0.6	2.5	-59	161.4	165.8	2.1	FA180178	0.01	0.4	2.8	3.9	https://youtu.be/Nj2jZxr6iW8
165	220596	*	3	28/06	0.27	20.3	0.3	3.4	-28	167.6	166.7	3.1	201156	-0.20	0.4	3.4	4.0	https://youtu.be/8yS-TGJIToE
166	220795		2	29/06	0.21	19.0	0.0	3.4	-40	162.2	160.2	2.7	210385	-0.41	1.4	3.2	4.2	https://youtu.be/x6p0_FYupGU
167	220115		2	19/06	0.25	19.2	0.5	3.7	-25	161.6	156.6	2.2	210385	-0.53	2.1	3.4	4.3	https://youtu.be/5PXZyKfH27A
168	221067		3	11/07	0.17	18.4	-0.1	3.4	-22	164.2	161.7	3.4	201156	-0.32	0.5	3.1	4.3	https://youtu.be/cZTF-zC-6xg
169	220514		2	27/06	0.16	17.3	0.4	3.8	-25	159.3	158.0	1.7	210725	-0.21	0.0	3.3	3.7	https://youtu.be/8zVuNRFB9pM
170	220870		3	01/07	0.26	19.5	-0.4	2.8	-25	163.3	161.4	3.4	201156	-0.30	0.9	2.9	4.4	https://youtu.be/5MEXp4Fzsog
171	220700		3	29/06	0.22	19.1	-0.3	2.6	-36	160.5	160.3	3.3	201156	-0.22	0.4	2.6	4.0	https://youtu.be/IKQA6scakHg
172	220166		2	21/06	0.27	19.8	-0.7	2.3	-31	163.4	163.7	3.3	201156	-0.14	0.8	2.6	4.6	https://youtu.be/V6GwXovCXNQ
173	220253	*	3	22/06	0.15	18.6	0.8	3.8	-39	160.3	158.7	3.0	210385	-0.35	1.1	3.5	3.5	https://youtu.be/ICanpB9PCfo

25th Felix Rams Lambplan Ram Sale 7/09/23					Trait leaders					Top 1%	Red Top 5%	Blue Top 10%	Green Top 20%						
Poll Dorsets Lot 1-120					Spring drop Poll Dorsets Lots 117-150					White Suffolks Lots 151-212									
Lot	Animal	DNA	s/t	DOB	BWT	PWT	PFAT	PEMD	PWEC	TCP	LEQ	LE_DIR	Sire	IMF	SHRF	DRESS	LMY	Video	
174	220385		2	25/06	0.37	19.7	-0.2	3.2	-51	163.8	164.8	1.8	210385	-0.21	1.2	3.1	4.4	https://youtu.be/iVEZh5EiBW4	
175	220597	*	3	28/06	0.26	21.1	0.2	2.8	-51	161.7	162.0	3.2	201156	-0.27	2.5	3.1	4.1	https://youtu.be/JFmHMsVfx6k	
176	220755		2	29/06	0.27	18.4	0.5	3.1	-54	158.7	162.3	3.0	201156	-0.01	-0.2	2.9	3.5	https://youtu.be/Zc9Ffdakd8k	
177	220204	*	3	22/06	0.19	18.3	-0.4	2.9	-44	161.2	161.1	2.7	210815	-0.27	0.8	2.7	4.0	https://youtu.be/89J5JL4pjCU	
178	220607		3	27/06	0.22	18.1	0.3	3.0	-46	155.7	156.5	2.7	210385	-0.19	0.8	2.8	3.4	https://youtu.be/khalq6Sm_Ac	
179	221095	*	2	13/07	0.3	18.4	-0.1	2.9	-52	163.1	169.1	2.2	210815	0.22	-1.3	2.6	3.8	https://youtu.be/HfNvECik7Ys	
180	220997	*	3	05/07	0.29	20.3	-0.5	2.4	-23	164.5	161.9	3.1	201156	-0.34	0.8	3.0	4.3	https://youtu.be/KhUoERDxUNU	
181	220001	*	3	15/06	0.21	18.3	-0.1	3.8	-51	165.1	166.8	1.5	211102	-0.17	0.4	3.3	4.6	https://youtu.be/XzD63QZ0CLY	
182	220110		2	18/06	0.31	19.0	-0.5	2.8	-53	158.9	161.1	2.0	210815	-0.14	2.7	2.7	4.6	https://youtu.be/TH1KEI9_axA	
183	220857	*	3	30/06	0.26	20.1	1.0	3.5	-51	162.6	163.8	2.0	210385	-0.18	0.1	3.5	3.4	https://youtu.be/GQKYssyJXVE	
184	220968	*	2	04/07	0.08	21.2	-0.2	2.3	-63	164.6	168.5	3.8	FA180179	-0.06	0.9	3.4	3.8	https://youtu.be/4-AqUipuQzQ	
185	221227		2	17/07	0.03	17.6	0.8	4.2	-43	160.8	160.9	3.2	210385	-0.23	0.4	3.4	3.5	https://youtu.be/3RYcSQnYG28	
186	220132	*	2	20/06	0.21	18.8	0.5	3.6	-67	163.1	166.1	2.2	210815	-0.14	0.8	3.4	3.7	https://youtu.be/SFc3pyYF0y8	
187	220293		2	23/06	0.23	20.0	-0.7	3.1	-41	167.3	165.2	3.2	201156	-0.42	1.5	3.1	4.9	https://youtu.be/-ZloVBYeBEQ	
188	220676		3	28/06	0.23	18.1	-0.1	3.5	-49	161.9	162.8	2.0	210815	-0.21	0.7	3.1	4.1	https://youtu.be/NhwgeqVRTI4	
189	220794		2	29/06	0.14	18.1	0.0	4.1	-60	165.3	164.3	2.7	210385	-0.46	0.8	3.4	4.5	https://youtu.be/XUnM-N5v4tc	
190	220678		2	28/06	0.21	18.5	0.4	3.3	-39	159.5	159.8	2.5	210385	-0.19	0.6	3.0	3.9	https://youtu.be/Mn_tzTSK3Y	
191	221079		2	12/07	0.28	19.1	-0.3	2.4	-16	157.5	155.6	2.8	201156	-0.22	1.6	2.6	4.0	https://youtu.be/bMEawWjua-g	
192	221107	*	2	14/07	0.07	18.5	0.4	3.2	-62	163.8	169.2	3.3	210815	0.09	-0.8	3.0	3.6	https://youtu.be/jmhxRoz5z38	
193	221274	*	3	16/06	0.24	18.1	0.8	4.3	-16	163.4	163.8	-0.2	210906	0.02	-0.3	3.5	4.1	https://youtu.be/i0WVdrAvZq8	
194	221731		2	03/07	0.35	19.9	0.1	2.9	-31	159.1	158.4	2.1	210385	-0.21	2.1	3.0	4.0	https://youtu.be/EfkQn8By7sY	
195	220092		1	02/07	0.24	18.9	-0.3	2.7	-30	162.1	161.8	3.4	201156	-0.19	0.6	2.7	4.3	https://youtu.be/rBqCxQUpyn8	

25th Felix Rams Lambplan Ram Sale 7/09/23					Trait leaders			Top 1%	Red Top 5%	Blue Top 10%	Green Top 20%							
					Poll Dorsets Lot 1-120			Spring drop Poll Dorsets Lots 117-150			White Suffolks Lots 151-212							
Lot	Animal	DNA	s/t	DOB	BWT	PWT	PFAT	PEMD	PWEC	TCP	LEQ	LE_DIR	Sire	IMF	SHRF	DRESS	LMY	Video
196	220307		2	24/06	0.24	19.0	0.0	2.6	-24	160.0	160.3	3.3	201156	-0.09	-0.1	2.7	3.7	https://youtu.be/EDFuJ-yLYkQ
197	220924	*	2	03/07	0.29	20.0	-0.2	2.5	-48	159.3	160.2	1.4	LH180231	-0.19	1.6	3.0	4.0	https://youtu.be/do-Eebuty78
198	220073	*	1	29/06	0.23	19.2	-0.3	3.1	-56	163.4	167.4	1.8	210725	0.02	0.1	2.9	3.9	https://youtu.be/QfAxmiR3ciE
199	220750	*	3	29/06	0.18	18.3	0.2	3.9	-50	167.0	168.4	1.8	210815	-0.17	0.1	3.4	4.2	https://youtu.be/31av_rZTAGY
200	221725		3	28/06	0.22	18.0	-0.1	3.5	-49	161.9	162.8	2.1	210815	-0.21	0.7	3.1	4.1	https://youtu.be/8u6vrdFdlY
201	221401	*	1	22/08	0.26	22.4	-0.2	2.3	-44	164.6	166.9	1.2	211313	-0.04	0.4	2.8	4.1	https://youtu.be/ue2R-nUtns
202	221584	*	3	18/08	0.12	19.0	-0.1	3.1	-51	161.8	168.4	1.5	200145	0.27	-0.5	3.0	4.0	https://youtu.be/2oDx9e3xd_0
203	221664		1	06/09	0.34	20.0	0.4	2.8	-71	160.6	164.8	2.0	210815	-0.07	0.9	3.0	3.7	https://youtu.be/gIE-02azp7c
204	221589	*	2	19/08	0.02	16.8	0.8	4.2	-62	165.7	171.5	1.5	200145	0.14	-3.2	3.4	3.6	https://youtu.be/-6Fi-jhRfe8
205	221570	*	2	17/08	0.18	18.6	0.1	3.1	-48	159.2	163.6	1.3	200145	0.10	0.4	3.1	3.9	https://youtu.be/Z9nQmbCRCDA
206	221673	*	1	31/08	0.24	19.5	0.2	3.0	-41	160.5	163.1	2.8	210815	-0.01	0.5	2.7	3.8	https://youtu.be/oEXU3A9fKT4
207	221452	*	2	25/08	0.17	19.2	0.4	4.0	-57	170.0	173.1	2.9	210815	-0.06	0.5	3.6	4.3	https://youtu.be/TzRVVoO1O4uQ
208	221485		2	27/08	0.31	18.5	0.5	3.0	-46	161.0	165.6	2.0	210815	0.15	-0.8	3.1	3.2	https://youtu.be/schV-RWv54I
209	221442	*	2	25/08	0.21	22.2	0.4	2.5	-33	164.8	168.3	1.4	211313	0.15	-0.4	3.6	3.0	https://youtu.be/gMaOgeKn7Nk
210	221523	*	2	13/08	0.08	17.0	0.3	2.5	-66	155.9	165.1	1.6	200145	0.38	-2.6	2.7	2.8	https://youtu.be/t2Je5FCAS5M
211	221640	*	2	29/08	0.11	20.7	0.2	3.2	-61	167.5	171.8	1.7	200145	0.00	-0.9	3.3	4.2	https://youtu.be/1c4gCQqNwWc
212	221684	*	2	27/08	0.06	19.1	0.1	2.9	-72	161.9	166.6	2.5	211313	-0.05	-0.5	3.0	3.7	https://youtu.be/hFvxutw1ekQ

Report: Genetic Trends
Analysis: TERMINAL
Analysis date: 01/08/2023
Flock code: 163677
Flock name: FELIX

Total animals by drop



Reports are prepared using data supplied by breeders and/or accredited operators. We cannot guarantee the accuracy of this data. ASBV's are designed to estimate genetic merit of animals from the data supplied. The reports are provided to assist breeders but no liability is accepted for the outcome resulting from the use of this information.



Report: Genetic Trends
Analysis: TERMINAL
Analysis date: 01/08/2023
Flock code: 163677
Flock name: FELIX



FELIX

Year	TCP	BWT	PWT	PEMD	PFAT	LMY	IMF	SHEARF5	DRESS	LE_DIR	CCFAT	CEMD
2013	129.41	0.34	12.84	1.76	-0.63	3.48	-0.65	6.31	1.77	-0.57	-1.24	1.58
2014	130.85	0.30	13.49	1.98	-0.46	3.50	-0.64	6.73	1.98	-0.08	-1.14	1.70
2015	135.27	0.29	14.01	2.23	-0.52	3.73	-0.68	6.48	2.11	0.47	-1.27	2.03
2016	135.58	0.25	14.48	2.15	-0.44	3.59	-0.55	6.13	2.07	0.55	-1.18	1.82
2017	141.43	0.28	15.10	2.39	-0.47	3.79	-0.44	4.81	2.16	0.70	-1.31	2.04
2018	144.09	0.23	15.31	2.54	-0.44	3.88	-0.44	4.75	2.43	0.93	-1.36	2.33
2019	147.45	0.21	16.21	2.73	-0.33	4.01	-0.41	4.45	2.65	1.14	-1.34	2.41
2020	149.94	0.25	16.57	2.94	-0.33	4.18	-0.38	4.00	2.78	0.76	-1.37	2.61
2021	153.25	0.24	17.02	2.99	-0.35	4.17	-0.28	3.25	2.87	1.02	-1.39	2.71
2022	155.80	0.24	17.11	3.23	-0.34	4.26	-0.28	2.72	3.01	0.88	-1.44	2.95
2023	158.55	0.23	17.54	3.28	-0.22	4.09	-0.15	1.73	3.12	1.13	-1.35	2.96

Report: Genetic Trends
Analysis: TERMINAL
Analysis date: 01/08/2023
Flock code: 163677
Flock name: FELIX



Breed

Year	TOP	BWT	PWT	PEMD	PFAT	LMY	IMF	SHEARF5	DRESS	LE_DIR	COFAT	CEMD
2013	126.12	0.37	11.00	1.08	-0.82	2.71	-0.58	4.70	1.32	-0.32	-1.12	1.23
2014	127.49	0.37	11.44	1.19	-0.78	2.81	-0.58	4.74	1.43	-0.23	-1.14	1.35
2015	128.53	0.39	11.76	1.32	-0.73	2.86	-0.58	4.75	1.50	-0.24	-1.13	1.45
2016	129.94	0.39	12.24	1.39	-0.72	2.98	-0.60	4.79	1.61	-0.26	-1.15	1.53
2017	131.79	0.39	12.64	1.54	-0.69	3.14	-0.61	4.90	1.73	-0.17	-1.20	1.69
2018	133.34	0.39	13.03	1.63	-0.66	3.23	-0.61	4.89	1.83	-0.16	-1.21	1.79
2019	134.68	0.39	13.32	1.74	-0.62	3.30	-0.61	4.80	1.91	-0.11	-1.21	1.89
2020	135.88	0.39	13.56	1.84	-0.61	3.39	-0.60	4.80	1.99	-0.11	-1.23	2.00
2021	138.07	0.39	13.95	1.96	-0.60	3.49	-0.57	4.55	2.10	-0.04	-1.27	2.10
2022	140.72	0.39	14.40	2.16	-0.54	3.57	-0.53	4.19	2.28	0.00	-1.26	2.29
2023	147.47	0.35	15.62	2.63	-0.40	3.72	-0.36	3.14	2.63	0.32	-1.27	2.62

Report: Genetic Trends
Analysis: TERMINAL
Analysis date: 01/08/2023
Flock code: 163677
Flock name: FELIX

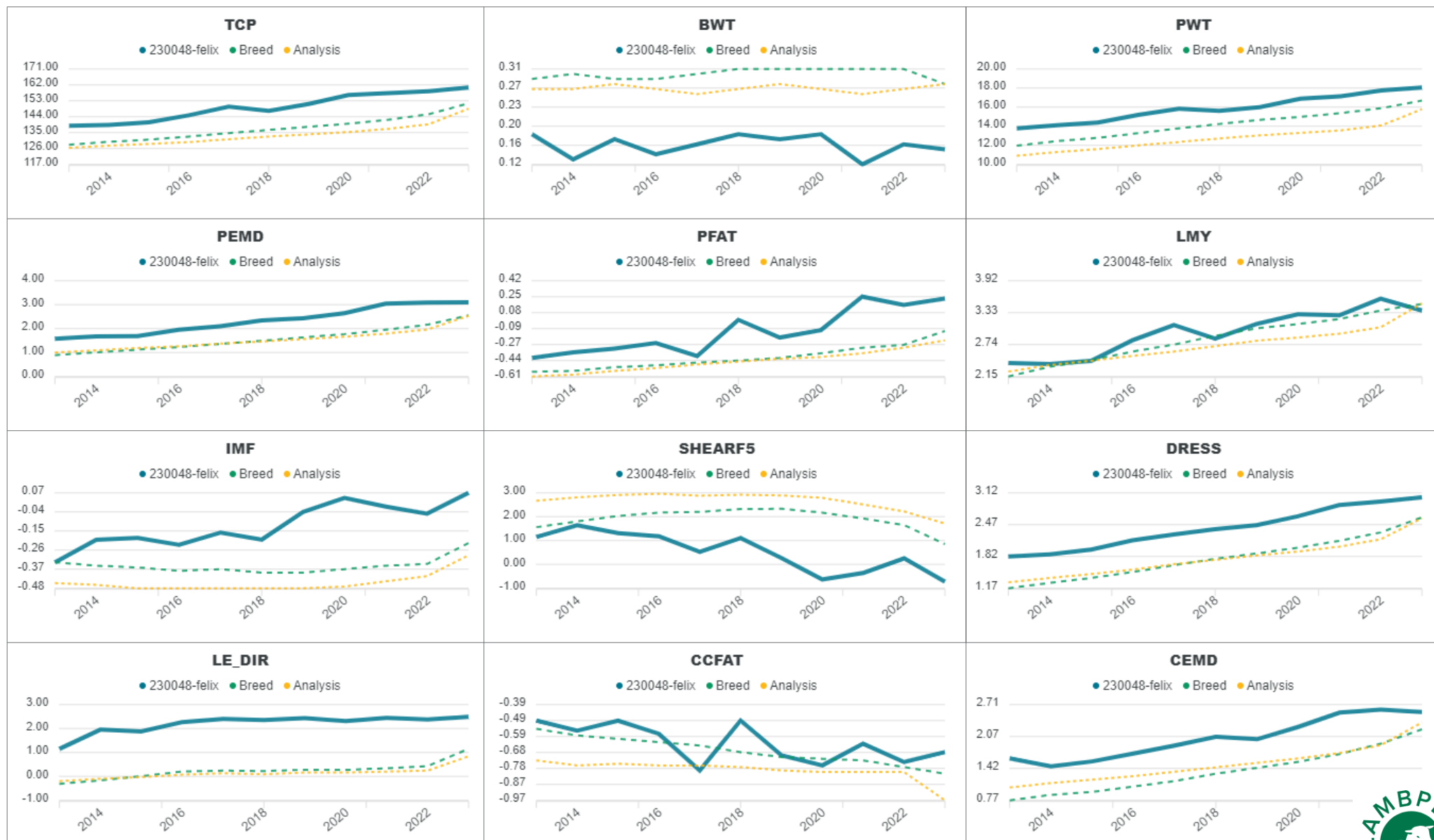
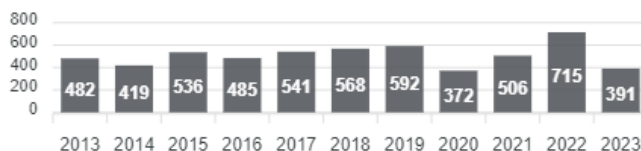


Analysis

Year	TOP	BWT	PWT	PEMD	PFAT	LMY	IMF	SHEARF5	DRESS	LE_DIR	COFAT	CEMD
2013	126.94	0.27	10.91	1.00	-0.61	2.24	-0.45	2.67	1.29	-0.20	-0.73	1.03
2014	127.63	0.27	11.29	1.09	-0.59	2.36	-0.46	2.81	1.38	-0.10	-0.76	1.12
2015	128.57	0.28	11.60	1.19	-0.55	2.44	-0.48	2.91	1.46	-0.03	-0.75	1.19
2016	129.59	0.27	11.99	1.26	-0.52	2.53	-0.48	2.96	1.55	0.07	-0.76	1.26
2017	131.25	0.26	12.34	1.37	-0.48	2.61	-0.48	2.88	1.66	0.13	-0.76	1.35
2018	132.74	0.27	12.72	1.46	-0.45	2.71	-0.48	2.92	1.75	0.09	-0.77	1.44
2019	133.97	0.28	13.04	1.56	-0.42	2.81	-0.48	2.89	1.84	0.16	-0.79	1.53
2020	135.32	0.27	13.30	1.66	-0.40	2.87	-0.47	2.79	1.92	0.16	-0.80	1.62
2021	137.13	0.26	13.56	1.79	-0.36	2.94	-0.44	2.51	2.02	0.20	-0.80	1.73
2022	139.69	0.27	14.08	1.96	-0.30	3.06	-0.41	2.22	2.17	0.24	-0.80	1.89
2023	148.51	0.28	15.78	2.53	-0.22	3.50	-0.29	1.71	2.60	0.84	-0.97	2.35

Report: Genetic Trends
Analysis: TERMINAL
Analysis date: 01/08/2023
Flock code: 230048
Flock name: 230048-FELIX

Total animals by drop



Reports are prepared using data supplied by breeders and/or accredited operators. We cannot guarantee the accuracy of this data. ASBV's are designed to estimate genetic merit of animals from the data supplied. The reports are provided to assist breeders but no liability is accepted for the outcome resulting from the use of this information.



Report: Genetic Trends
Analysis: TERMINAL
Analysis date: 01/08/2023
Flock code: 230048
Flock name: 230048-FELIX



230048-FELIX

Year	TCP	BWT	PWT	PEMD	PFAT	LMY	IMF	SHEARF5	DRESS	LE_DIR	COFAT	CEMD
2013	138.90	0.18	13.78	1.57	-0.41	2.40	-0.33	1.15	1.82	1.15	-0.49	1.62
2014	139.26	0.13	14.10	1.68	-0.35	2.38	-0.20	1.64	1.88	1.95	-0.55	1.46
2015	140.83	0.17	14.39	1.69	-0.31	2.44	-0.19	1.31	1.96	1.88	-0.49	1.56
2016	144.81	0.14	15.19	1.95	-0.25	2.82	-0.23	1.18	2.15	2.27	-0.57	1.72
2017	149.64	0.16	15.84	2.10	-0.39	3.10	-0.16	0.52	2.27	2.40	-0.79	1.88
2018	147.33	0.18	15.60	2.34	0.00	2.85	-0.20	1.10	2.38	2.38	-0.49	2.06
2019	151.16	0.17	15.99	2.43	-0.19	3.12	-0.04	0.28	2.46	2.43	-0.70	2.01
2020	156.22	0.18	16.89	2.64	-0.11	3.30	0.04	-0.63	2.64	2.31	-0.76	2.26
2021	157.31	0.12	17.14	3.04	0.25	3.28	-0.01	-0.36	2.87	2.44	-0.63	2.55
2022	158.44	0.16	17.74	3.09	0.16	3.59	-0.05	0.25	2.94	2.38	-0.74	2.61
2023	160.50	0.15	18.05	3.10	0.23	3.37	0.07	-0.73	3.03	2.49	-0.68	2.56

Report: Genetic Trends
Analysis: TERMINAL
Analysis date: 01/08/2023
Flock code: 230048
Flock name: 230048-FELIX



Breed

Year	TOP	BWT	PWT	PEMD	PFAT	LMY	IMF	SHEARF5	DRESS	LE_DIR	COFAT	CEMD
2013	128.12	0.29	11.96	0.89	-0.56	2.15	-0.33	1.56	1.17	-0.31	-0.54	0.77
2014	129.82	0.30	12.44	1.01	-0.55	2.33	-0.35	1.80	1.28	-0.17	-0.58	0.88
2015	131.00	0.29	12.78	1.12	-0.51	2.45	-0.36	2.03	1.38	0.01	-0.60	0.94
2016	132.73	0.29	13.27	1.23	-0.49	2.61	-0.38	2.17	1.50	0.20	-0.62	1.05
2017	134.73	0.30	13.78	1.36	-0.46	2.74	-0.37	2.20	1.64	0.24	-0.64	1.16
2018	136.49	0.31	14.23	1.49	-0.44	2.90	-0.39	2.32	1.77	0.22	-0.68	1.31
2019	138.27	0.31	14.67	1.63	-0.41	3.04	-0.39	2.33	1.88	0.28	-0.71	1.43
2020	140.04	0.31	14.97	1.77	-0.36	3.12	-0.37	2.17	2.00	0.27	-0.72	1.55
2021	142.28	0.31	15.38	1.95	-0.30	3.21	-0.35	1.92	2.14	0.34	-0.73	1.71
2022	145.37	0.31	15.89	2.16	-0.27	3.37	-0.34	1.65	2.31	0.43	-0.77	1.92
2023	151.50	0.28	16.68	2.55	-0.12	3.49	-0.22	0.85	2.62	1.15	-0.81	2.21

Report: Genetic Trends
Analysis: TERMINAL
Analysis date: 01/08/2023
Flock code: 230048
Flock name: 230048-FELIX



Analysis

Year	TOP	BWT	PWT	PEMD	PFAT	LMY	IMF	SHEARF5	DRESS	LE_DIR	COFAT	CEMD
2013	126.94	0.27	10.91	1.00	-0.61	2.24	-0.45	2.67	1.29	-0.20	-0.73	1.03
2014	127.63	0.27	11.29	1.09	-0.59	2.36	-0.46	2.81	1.38	-0.10	-0.76	1.12
2015	128.57	0.28	11.60	1.19	-0.55	2.44	-0.48	2.91	1.46	-0.03	-0.75	1.19
2016	129.59	0.27	11.99	1.26	-0.52	2.53	-0.48	2.96	1.55	0.07	-0.76	1.26
2017	131.25	0.26	12.34	1.37	-0.48	2.61	-0.48	2.88	1.66	0.13	-0.76	1.35
2018	132.74	0.27	12.72	1.46	-0.45	2.71	-0.48	2.92	1.75	0.09	-0.77	1.44
2019	133.97	0.28	13.04	1.56	-0.42	2.81	-0.48	2.89	1.84	0.16	-0.79	1.53
2020	135.32	0.27	13.30	1.66	-0.40	2.87	-0.47	2.79	1.92	0.16	-0.80	1.62
2021	137.13	0.26	13.56	1.79	-0.36	2.94	-0.44	2.51	2.02	0.20	-0.80	1.73
2022	139.69	0.27	14.08	1.96	-0.30	3.06	-0.41	2.22	2.17	0.24	-0.80	1.89
2023	148.51	0.28	15.78	2.53	-0.22	3.50	-0.29	1.71	2.60	0.84	-0.97	2.35